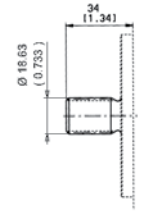


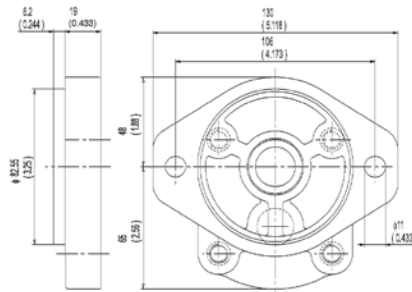
Drive Shaft  
Code 54



Max. torque 140 Nm

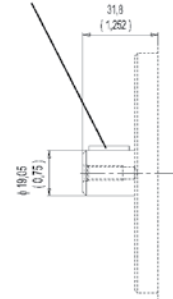
## SAE A 2 BOLT

PART NUMBER	DISPLACEMENT Cu. In (CC)	GPM @ 1800 RPM	MAX		PORT SIZE		SHAFT		MTG FLG	WT (LBS)
			RPM	PSI	INLET	OUTLET	SIZE	ROT		
612034752	0.50 (8.3)	3.90	3500	3600	SAE 12	SAE 10	3/4 -11 SPLINE	CW	SAE A 2 BOLT	4.9
612034751								CCW		
612035122	0.68 (11.3)	5.30						CW		5.5
612035121								CCW		
612036832	0.84 (13.8)	6.55						CW		6
612036831								CCW		
612018082	1.01 (16)	7.87	3000	3140				CW		6.5
612018081								CCW		
612035142	1.15 (19)	8.96	2750	2900				CW		6.8
612035141								CCW		
612035322	1.37 (22.5)	10.68	2500	2600				CW		7.1
612035321								CCW		
612080662	1.58 (26)	12.31			CW					
612080661					CCW					



Drive Shaft  
Code 85

Woodruff (4.78x4.78x12.7)



Max. torque 120 Nm

## SAE A 2 BOLT

PART NUMBER	DISPLACEMENT Cu. In (CC)	GPM @ 1800 RPM	MAX		PORT SIZE		SHAFT		MTG FLG	WT (LBS)		
			RPM	PSI	INLET	OUTLET	SIZE	ROT				
612037572	0.27 (4.5)	2.10	4000	3600	SAE 12	SAE 10	3/4 KEY	CW	SAE A 2 BOLT	4.6		
612037571								CCW				
612095952	0.40 (6.5)	3.12						CW		4.9		
612095951								CCW				
612035422	0.50 (8.3)	3.90						3500		3140	CW	5.5
612035421											CCW	
612035432	0.68 (11.3)	5.30	2750	2900				CW		6		
612035431								CCW				
612035442	0.84 (13.8)	6.55	2500	2600				CW		6.5		
612035441								CCW				
612034552	1.01 (16)	7.87	3000	3140				CW		6.8		
612034551								CCW				
612034562	1.15 (19)	8.96			CW	7.1						
612034561					CCW							
612032762	1.37 (22.5)	10.68			CW							
612032761					CCW							
612034572	1.58 (26)	12.31			CW							
612034571					CCW							