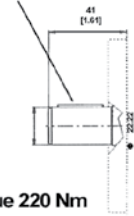


Woodruff Key (6.35 X 6.35 x 17.7)



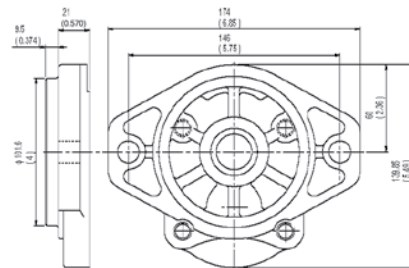
Max torque 220 Nm

Drive Shaft Code 87

# PUMPS

## SAE B 2 BOLT

PART NUMBER	DISPLACEMENT Cu. In (CC)	GPM @ 1800 RPM	MAX		PORT SIZE		SHAFT		MTG FLG	WT (LBS)			
			RPM	PSI	INLET	OUTLET	SIZE	ROT					
613873912	0.97 (16)	7.5	3000	3600	SAE 12	SAE 10	7/8 KEY	SAE B 2 BOLT		CW	7.48		
613873911										CCW			
613873932	1.17 (19)	9.12								CW	7.92		
613873931										CCW			
613871252	1.35 (22)	10.5								CW	8.36		
613871251										CCW			
613873732	1.53 (25)	11.9			CW	9							
613873731					CCW								
613871272	1.68 (28)	13.09			2750	2900				SAE 16	SAE 12	CW	9.9
613871271												CCW	
613871282	1.97 (32)	15.35										CW	10.47
613871281												CCW	
613871292	2.32 (38)	18.07	CW	11									
613871291			CCW										
613871302	2.69 (44)	20.96	2500	2465	CW	11.66							
613871301					CCW								

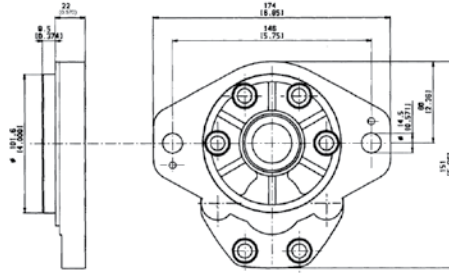


Max torque 320 Nm

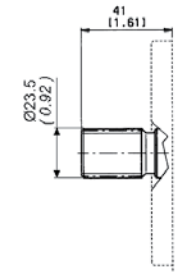
Drive Shaft Code 55

## SAE B 2 BOLT

PART NUMBER	DISPLACEMENT Cu. In (CC)	GPM @ 1800 RPM	MAX		PORT SIZE		SHAFT		MTG FLG	WT (LBS)	
			RPM	PSI	INLET	OUTLET	SIZE	ROT			
613874792	0.72 (11.5)	5.61	3000	3600	SAE 12	SAE 10	7/8-13T SPLINE	SAE B 2 BOLT		CW	8.36
613874791										CCW	
613874702	0.86 (13.8)	6.7								CW	9.02
613874701										CCW	
613873902	0.97 (16)	7.5								CW	7.48
613873901										CCW	
613873922	1.17 (19)	9.12			CW	7.92					
613873921					CCW						
613871172	1.35 (22)	10.5			CW	8.36					
613871171					CCW						
613873722	1.53 (25)	11.9			CW	9					
613873721					CCW						
613871192	1.68 (28)	13.09	2750	2900	SAE 16	SAE 12	CW	9.9			
613871191							CCW				
613871202	1.97 (32)	15.35					CW	10.47			
613871201							CCW				
613871212	2.32 (38)	18.07					CW	11			
613871211							CCW				
613871222	2.69 (44)	20.96	2500	2465	CW	11.66					
613871221					CCW						



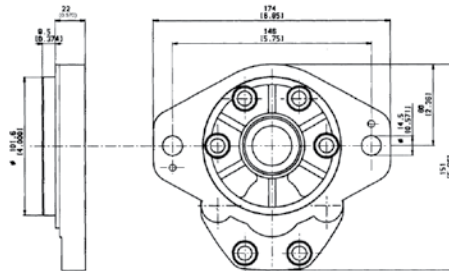
Drive Shaft  
Code 55



Max. torque 320 Nm

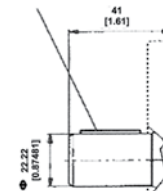
## SAE B 2 BOLT

PART NUMBER	DISPLACEMENT Cu. In (CC)	GPM @ 1800 RPM	MAX		PORT SIZE		SHAFT		MTG FLG	WT (LBS)			
			RPM	PSI	INLET	OUTLET	SIZE	ROT					
612980562	1.25 (21)	9.74	3000	3600	SAE 16	SAE 12	7/8 13 SPLINE	CW	SAE B 2 BOLT	11.2			
612980561								CCW					
612979652	1.65 (27)	12.86						CW		11.7			
612979651								CCW					
612979662	2.04 (33)	15.90						CW		12.7			
612979661								CCW					
612980572	2.36 (38)	18.39	2750	3500	SAE 20	SAE 16		CW	13.2				
612980571								CCW					
612979672	2.86 (46)	22.29						CW	15.4				
612979671								CCW					
612980582	3.30 (55)	25.71						2500	3190	SAE 20	SAE 16	CW	16.1
612980581												CCW	
612980592	3.85 (65)	30	2900	CW	17.7								
612980591				CCW									



Key (6.35 X 6.35 X 17.7)

Drive Shaft  
Code 87



Max torque 220 Nm

## SAE B 2 BOLT

PART NUMBER	DISPLACEMENT Cu. In (CC)	GPM @ 1800 RPM	MAX		PORT SIZE		SHAFT		MTG FLG	WT (LBS)			
			RPM	PSI	INLET	OUTLET	SIZE	ROT					
612978722	1.25 (21)	9.74	3000	3600	SAE 16	SAE 12	7/8 KEY	CW	SAE B 2 BOLT	11.2			
612978721								CCW					
612978732	1.65 (27)	12.86						CW		11.7			
612978731								CCW					
612978742	2.04 (33)	15.90						CW		12.7			
612978741								CCW					
612978752	2.36 (38)	18.39	2750	3500	SAE 20	SAE 16		CW	13.2				
612978751								CCW					
612978762	2.86 (46)	22.29						CW	15.4				
612978761								CCW					
612978772	3.30 (55)	25.71						2500	3190	SAE 20	SAE 16	CW	16.1
612978771												CCW	
612972332	3.85 (65)	30	2900	CW	17.7								
612972331				CCW									

R12992701 standard seal kit for 3pb pumps  
R12970760 priority cover vps (71-140)