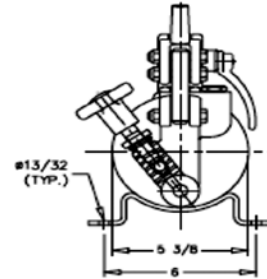
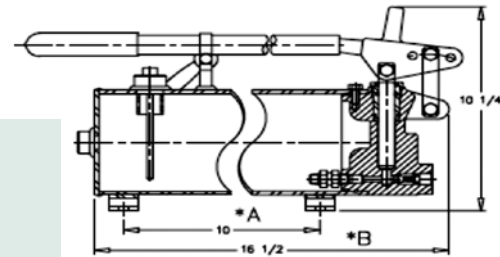


2 STAGE HIGH-LOW & HAND PUMPS

LOGSPLITTER PUMPS

- 2 SPEED PUMP
- 3600 MAXIMUM RPM
- 3000 PSI MAXIMUM PRESSURE
- 1" TUBE INLET

PART NUMBER	DESCRIPTION	STRAIGHT KEYED SHAFT	NPT OUTLET	BOLT MOUNTING
CBN-8,8/3,0	11 GPM / 2,8 GPM	1/2	1/2	1,78-4
CBN-13/4,2	16 GPM / 4 GPM	1/2	1/2	1,78-4
CBDN-16/7	22 GPM	5/8	3/4	3,25-2
CBDN-22/7	28 GPM	5/8	3/4	3,25-2



PM MODEL

HAND PUMPS

PM TYPE

- PORTS 3/8 NPT
 - 6000 PSI MAXIMUM PRESSURE
 - SINGLE ACTING APPLICATION
 - CAN BE MOUNTED VERTICALLY OR HORIZONTALLY
 - 3 DIFFERENT VOLUME & PRESSURE SETTINGS
 - Position 1: 1.25 cu. in. per stroke - 1500 PSI*
 - Position 2: 0.95 cu. in. per stroke - 2000 PSI*
 - Position 3: 0.65 cu. in. per stroke - 3000 PSI*
- * At applied force of 60-65 lbs. on handle

PART NUMBER	DESCRIPTION
PM-HP-10 B	1 GALLON TANK
PM-HP-5-B	1/2 GALLON TANK, 6 1/2" SHORTER

WHP TYPE

- 3500 PSI MAXIMUM PRESSURE
- "SA" SERIES IS SINGLE ACTING
- "DA" SERIES HAVE A BUILT IN DIRECTIONAL CONTROL VALVE
- 2.1 CUBIC INCH PER CYCLE (ONE UP AND ONE DOWN)

PART NUMBER	DESCRIPTION
WHP-21-DA	2.1 CUBIC INCH DOUBLE ACTING HEAD
WHP-21-SA	2.1 CUBIC INCH SINGLE ACTING HEAD
WHP-T-300	STEEL TANK, 300 CU. IN. 1.3 GAL.
WHP-T-180	STEEL TANK, 180 CU. IN. 8 GAL.



WHP MODEL

VALVES

VDM6 SERIE

- 5000 PSI MAXIMUM PRESSURE
- 15 GPM NOMINAL FLOW RATE
- SAE 08 ON P, A & B PORTS
- SAE 10 ON T PORT
- DOUBLE ACTING, SPRING RETURN, OPEN CENTER
- RELIEF SET AT 2500 PSI
- HANDLES INCLUDED



623100131

MOST COMMON VALVES

PART NUMBER	DESCRIPTION
623100110	1 SPOOL STD VALVE
623100120	2 SPOOLS STD VALVE
623100130	3 SPOOLS STD VALVE
623100140	4 SPOOLS STD VALVE
623100150	5 SPOOLS STD VALVE
623100160	6 SPOOLS STD VALVE
623105500	7 SPOOLS STD VALVE
623106980	2 SPOOLS ELECTRIC 12V WITH LEVERS
623108190	7 SPOOLS C/W 2 JOYSTICK
623107340	1 SPOOL FLOAT, 1 SPOOL D.A.
623107870	1 SPOOL FLOAT, 1 SPOOL D.A. C/W JOYSTICK



623106980

POPULAR PARTS

PART NUMBER	DESCRIPTION
R23400320	DETENT KIT IN & OUT
R23400221	SPOOL SEAL KIT (PER SPOOL)
R23400221	SPRING RETURN KIT
R23400060	LEVER BOX
795429300	POWER BEYOND & CLOSE CENTER PLUG



623108190

