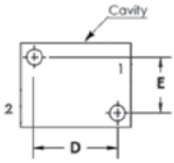


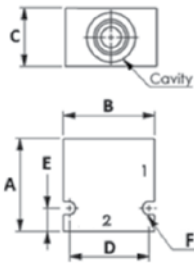
BODIES

- MADE IN ALUMINUM
- 3000 PSI MAXIMUM PRESSURE

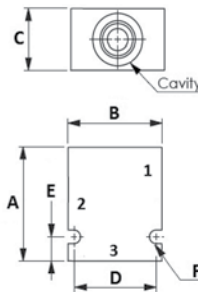
PART NUMBER	CAVITY	PORTS	DIMENSIONS					
			A	B	C	D	E	F
30102466	C8-2	SAE 06	2.0	2.0	1.25	1.50	1.50	1.50
30102359	C10-2	SAE 06	2.12	2.0	1.50	1.75	0.50	0.28
30102364		SAE 08						
30102813	C12-2	SAE 12	3.09	2.75	1.75	2.2	0.84	0.41
30102331	C16-2	SAE 12	3.0	3.0	2.0	2.44	0.75	
30102533	C8-3	SAE 06	2.5	2.25	1.25	1.75	0.25	0.28
30102354	C10-3	SAE 08	2.5	2.5	1.5	2.25	0.38	
30102535	C8-4	SAE 06	3.0	2.25	1.25	1.75	0.50	0.28
30102367	C10-4	SAE 08	3.25	2.5	1.5	2.25	0.38	



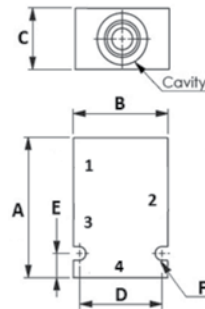
C8-2 BODY



C10-2 TO C16-2 BODIES



C8-3 AND C10-3 BODIES



C8-4 AND C10-4 BODIES

COILS

- DIN CONNECTOR MODELS
- OTHER VOLTAGE & TYPE OF CONNECTION AVAILABLE
- LOW POWER CONSUMPTION AVAILABLE. FOR SUBSTANTIAL SAVING.

PART NUMBER	VOLTS	WATTS	I. D.	HEIGHT	WIDTH
P-HC-12	12V DC	19	1/2"	1.78	1.25
P-HC-24	24V DC				
P-HC-11	110V AC	22	1/2"	2.03	1.56
D-HC-12	12V DC				
D-HC-24	24V DC				
D-HC-11	110V AC	28	3/4"	1.96	2.38
L-HC-12	12V DC				
L-HC-24	24V DC				
L-HC-11	110V AC	20	1/2"	1.41	1.51
T-HC-12	12V DC				
T-HC-24	24V DC				
T-HC-11	110V AC	20	1/2"	1.41	1.51
EC04W-200HD	12V DC				
EC04W-200HD	24V DC				
EC04W-200HB	110V AC				



DIN CONNECTORS

PART NUMBER	DESCRIPTION
29-0001	NO LED
29-0003/A	NO LED , WITH RECTIFIER (AC TO DC)
29-0004	WITH LED 12V DC/AC
29-0005	WITH LED 24V DC/AC
29-0007	WITH LED 110V DC/AC



SINGLE - 3 WAYS

- 2500 PSI MAXIMUM PRESSURE
- 20 GPM MAXIMUM FLOW:

PART NUMBER	PORTS
SS-2A1D	1/2 NPT
SS-3A1D	SAE 08

OPTIONS	PART NUMBER
END CAP KIT	660170009
LEVER HANDLE	660170007

DOUBLE - 6 WAYS

PART NUMBER	PORTS	MAX GPM
DS-1A1E	1/2 NPT	20
DS-4A1E	3/4 NPT	40

OPTIONS	PART NUMBER
KNOB	670400029
SPRING OFFSET	660170003
END CAP KIT	660170010

DOUBLE - 6 WAYS

- 3600 PSI MAXIMUM PRESSURE
- 13 GPM MAXIMUM FLOW:
- 2 POSITIONS DETENDED
- PORTS: SAE 08

PART NUMBER	DESCRIPTION	DESCRIPTION
DF06/6-A-S		OPEN CENTER IN TRANSITION
DF06/6-C-S		CLOSED CENTER IN TRANSITION

3 WAY ROTARY FLOW DIVERTERS

- OPEN CENTER TRANSITION AVAILABLE

PART NUMBER	CIRCUIT	MAX PSI	MAX GPM	PORT
DDF3V-03-C-N		4060	24	1/2" NPT
DDF3V-04-C-N		3625	32	3/4" NPT
DDF3V-05-C-N		47.5	1" NPT	

6 WAY ROTARY FLOW DIVERTERS

PART NUMBER	CIRCUIT	MAX PSI	MAX GPM	PORT
DDF6V-03-C-N		4060	24	1/2" NPT
DDF6V-04-C-N		3625	32	3/4" NPT
DDF6V-05-C-N		47.5	1" NPT	

Prince



sajami

