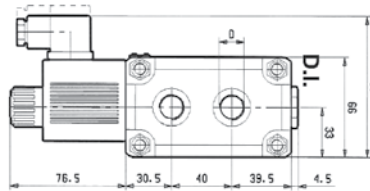
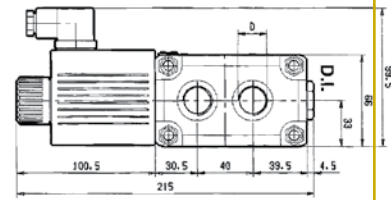


VS 125F



VS 245F



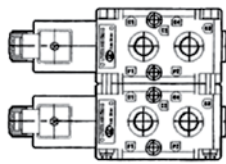
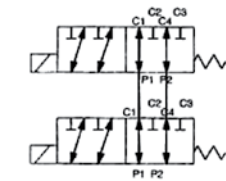
VS 285F

MODEL VS 245F - VS 285F - 6 WAYS / 2 POSITIONS MODULAR

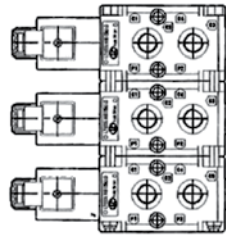
MODEL	MAX GPM	MAX PRESSURE (PSI)	PORT	CIRCUIT	PART NUMBER
VS 125F-12VDC	6.5	4500	SAE 4		L711A106A10B010
VS 245F-12VDC	13		SAE 8		L732C116A10B010
VS 245F-24VDC			SAE 10		L721C116A10C010
VS 285F-12VDC	24		SAE 10		L745D146A10B010
VS 285F-24VDC		L745D146A10C010			

Other circuits available on request

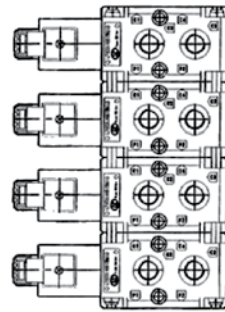
TYPE OF MOUNTING



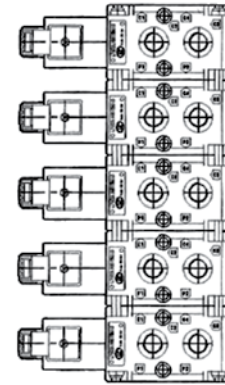
8 ways



10 ways



12 ways



14 ways

ACCESSORIES

COILS		
MODEL	VOLTAGE	PART NUMBER
VS 125F	12 VDC	271-0510
VS 125F	24 VDC	271-0511
VS 245F	12 VDC	271-0520
VS 245F	24 VDC	271-0521
VS 285F	12 VDC	281-0617
VS 285F	24 VDC	281-0618

110 volt available from stock

DIN CONNECTORS	
PART NUMBER	DESCRIPTION
29-001	STANDARD
29-004	LED 12V
29-005	LED 24V

Other connectors available

2 WAY HIGH PRESSURE

- CARBON STEEL ZINC PLATED
- SAE PORTS MODEL ALSO AVAILABLE FROM STOCK

PART NUMBER	MAX PSI	PORT SIZE
BKH-14-NPT-1125	7250	1/4 NPT
BKH-38-NPT-1125		3/8 NPT
BKH-12-NPT-1125		1/2 NPT
BKH-34-NPT-1125	5880	3/4 NPT
BKH-1-NPT-1125	5145	1" NPT
BKH-114-NPT-1125		1 1/4" NPT
BKH-112-NPT-1125		1 1/2" NPT

FULL PORTED MODELS

PART NUMBER	MAX PSI	PORT SIZE
SKH-1-NPT-3125	5880	1" NPT
SKH-114-NPT-3125		1 1/4" NPT
SKH-112-NPT-3125		1 1/2" NPT

LOCKING DEVICE

PART NUMBER	DESCRIPTION
LK1	FOR BKH 1/4" TO 1/2"
LK2	FOR BKH 3/4" TO 1 1/2"

3 WAY HIGH PRESSURE CARBON STEEL ZINC PLATED

PART NUMBER	MAX PSI	PORT SIZE
WBV3L-400	7250	1/4 NPT
WBV3L-600		3/8 NPT
WBV3L-800		1/2 NPT
WBV3L-1200	4500	3/4 NPT
WBV3L-1600		1" NPT

