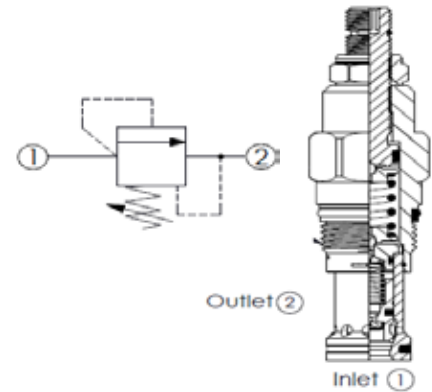


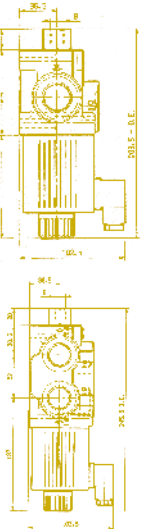
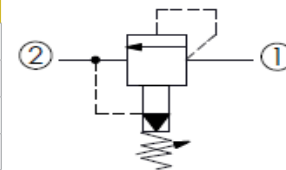
DIRECT ACTING RELIEF

PART NUMBER	MAX GPM	MAX PSI	PSI RANGE	CAVITY	SUN NO
DE-RVA-00-1500	8	4000	200-1500	C10-2	
DE-RVA-00-3000			1500-3000		
DE-RWA-00-3000			100-3000		
DE-RCA-00-3500	12	3500	250-3500		
RD10A25AL	25	5000	100-3000	T-10A	RDDA-LAN
RD3A25AL	50			T-3A	RDFA-LAN
RD16A25AL	100			T-16A	RDHA-LAN



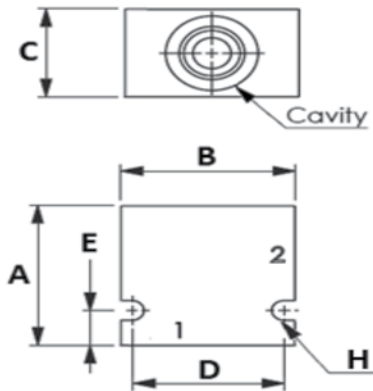
PILOT OPERATED

PART NUMBER	GPM	MAX PSI	PSI RANGE	CAVITY	SUN NO
DE-RVP-00-4000	20	3500	500-3500	C10-2	
RP10A20AL	25	5000	100-3000	T-10A	RPEC-LAN
RP3A20AL	50			T-3A	RPGC-LAN
RP16A20AL	100			T-16A	RPIC-LAN

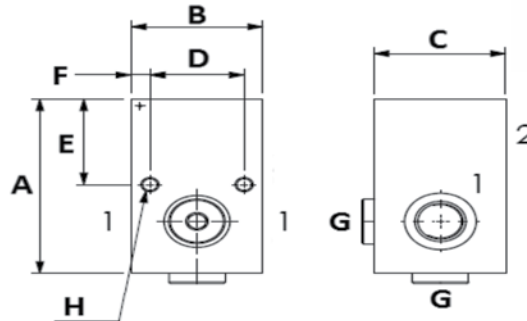


LINE MOUNT BODIES

- MADE IN ALUMINUM
- 3000 PSI MAXIMUM PRESSURE
- GAUGE PORT ON SELECTED MODELS
- DUCTILE IRON AVAILABLE ON DEMAND



DIMENSION FOR C10-2 BODIES



DIMENSION FOR T-* BODIES

SINGLE BODIES

PART NUMBER	CAVITY	PORTS 1 & 2	SUN NO	DIMENSIONS							
				A	B	C	D	E	F	G	H (2)
30102359	C10-2	SAE 06		2.12	2.0	1.50	1.75	0.50	-	-	0.28
30102364		SAE 08									
10A-S-T-S08+G	T-10A	SAE 08	FEJ	2.94	1.75	1.75	1.25	1.44	0.25	1/4 NPT	1/4-20 UNC 1/2" DEEP
3A-S-T-S12+G	T-3A	SAE 12	CEL	3.25	2.0	2.0	1.50	1.37	0.25		
16A-S-T-S16+G	T-16A	SAE 16	IEM	4.0	3.0	2.25	-	3.0	0.5		

DUAL RELIEF VALVES

VALVES

DIRECT ACTING

- 10 GPM MAXIMUM FLOW
- 3000 PSI MAXIMUM PRESSURE
- SAE 08 PORTS
- MADE IN ALUMINUM

PART NUMBER	PSI RANGE
SA-00-15-15	150-1500
SA-00-30-30	1500-3000
SA-00-40-40	2500-4000

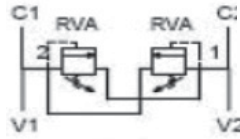
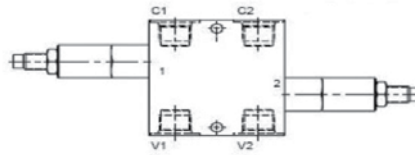
6 WAY DUAL RELIEF

- MADE FOR 2 DOUBLE ACTING CYLINDERS
- 15 GPM MAXIMUM FLOW
- 3000 PSI MAXIMUM PRESSURE
- 100-2100 PSI PRESSURE RANGE
- SAE 08 PORTS
- MADE IN ALUMINUM

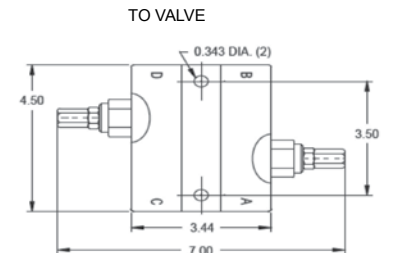
PILOTED RELIEF

- 30 GPM MAX
- 3000 PSI MAX
- MADE IN CAST IRON

PART NUMBER	PORTS	PSI RANGE
DRV-4LL	1/2 NPT	500-1500
DRV-4HH	1/2 NPT	1500-3000
DRV-5HH	SAE 08	1500-3000
DRV-2HH	3/4 NPT	1500-3000
DRV-2LL	3/4 NPT	500-1500
DRV-1HH	SAE 12	1500-3000



PART NO: 93405001



TO ACTUATOR

