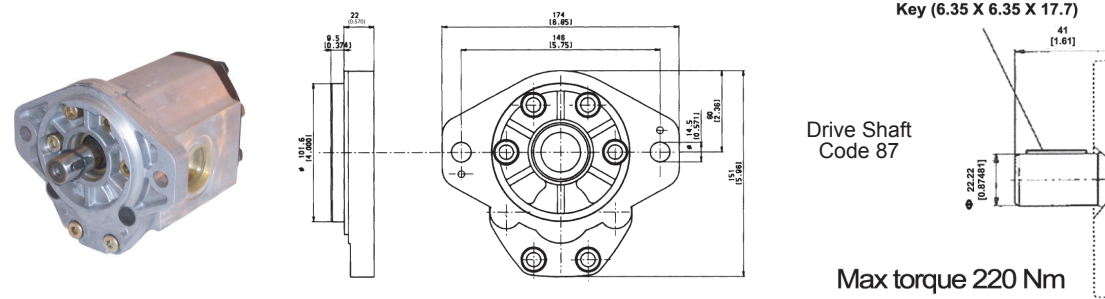


Drive Shaft Code 55

Max. torque 320 Nm

SAE B 2 BOLT

PART NUMBER	DISPLACEMENT Cu. In (CC)	GPM @ 1800 RPM	MAX		PORT SIZE		SHAFT		MTG FLG	WT (LBS)							
			RPM	PSI	INLET	OUTLET	SIZE	ROT									
612980562	1.25 (21)	9.74	3000	3600	SAE 16	SAE 12	7/8 13 SPLINE	SAE B 2 BOLT		11.2							
612980561											CW						
612979652	1.65 (27)	12.86									2750	3500	SAE 20	SAE 16	SAE B 2 BOLT		11.7
612979651																	
612979662	2.04 (33)	15.90									2500	2900	SAE 20	SAE 16	SAE B 2 BOLT		12.7
612979661																	
612980572	2.36 (38)	18.39	2750	3500	SAE 20	SAE 16	SAE B 2 BOLT		13.2								
612980571										CCW							
612979672	2.86 (46)	22.29	2500	2900	SAE 20	SAE 16	SAE B 2 BOLT		15.4								
612979671										CW							
612980582	3.30 (55)	25.71	2500	2900	SAE 20	SAE 16	SAE B 2 BOLT		16.1								
612980581										CCW							
612980592	3.85 (65)	30	2500	2900	SAE 20	SAE 16	SAE B 2 BOLT		17.7								
612980591										CCW							



Key (6.35 X 6.35 X 17.7)

Drive Shaft Code 87

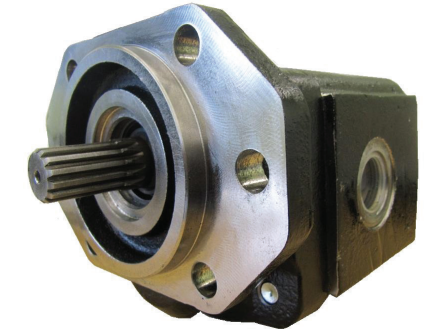
Max torque 220 Nm

SAE B 2 BOLT

PART NUMBER	DISPLACEMENT Cu. In (CC)	GPM @ 1800 RPM	MAX		PORT SIZE		SHAFT		MTG FLG	WT (LBS)							
			RPM	PSI	INLET	OUTLET	SIZE	ROT									
612978722	1.25 (21)	9.74	3000	3600	SAE 16	SAE 12	7/8 KEY	SAE B 2 BOLT		11.2							
612978721											CW						
612978732	1.65 (27)	12.86									2750	3500	SAE 20	SAE 16	SAE B 2 BOLT		11.7
612978731																	
612978742	2.04 (33)	15.90									2500	2900	SAE 20	SAE 16	SAE B 2 BOLT		12.7
612978741																	
612978752	2.36 (38)	18.39	2750	3500	SAE 20	SAE 16	SAE B 2 BOLT		13.2								
612978751										CW							
612978762	2.86 (46)	22.29	2500	2900	SAE 20	SAE 16	SAE B 2 BOLT		15.4								
612978761										CCW							
612978772	3.30 (55)	25.71	2500	2900	SAE 20	SAE 16	SAE B 2 BOLT		16.1								
612978771										CCW							
612972332	3.85 (65)	30	2500	2900	SAE 20	SAE 16	SAE B 2 BOLT		17.7								
612972331										CCW							

R12992701 standard seal kit for 3pb pumps  
R12970760 priority cover vps (71-140)

- SUPERIOR PERFORMANCE AND RELIABILITY IN HEAVY-DUTY HYDRAULIC APPLICATION
- CONSTRUCTION WITH LARGE AREA, LOW-FRICTION BUSHINGS PROVIDE STRENGTH, HIGH EFFICIENCY AND LONG LIFE IN SEVERE OPERATING ENVIRONMENT
- THE DESIGN INCLUDES AN ADVANCED THRUST PLATE AND SEAL CONFIGURATION WHICH OPTIMIZES PERFORMANCE EVEN IN HIGH TEMPERATURE AND LOW VISCOSITY CONDITIONS



PART NUMBER	DISP. CU IN/REV (CC REV)	GPM @ 1000 RPM	MAX		PORT SIZE		DIM "A"
			RPM	PSI	INLET	OUTLET	
615100002	1.43 (23)	6.1	3000	3800	SAE 16	SAE 12	5.54
615100022	1.75 (28)	7.5		4000			5.70
615100032	2.1 (34)	9.0		4000			5.88
615100012	2.46 (40)	10.6	2700	3800	SAE 16	SAE 16	6.00
615100042	2.89 (46)	12.5		4000			6.94
615100052	3.37 (55)	14.5		3800			7.18
615100062	3.92 (65)	16.9	2500	3500	SAE 20	SAE 16	7.45
615100072	4.48 (75)	19.2		3200			7.73
615100082	4.91 (80)	21.2		2900			7.96

- SHAFT 7/8-13T SPLINE
- CLOCKWISE ROTATION

