

- BODIES MADE IN ALUMINUM
- 3625 PSI MAXIMUM PRESSURE

1. FLOW CONTROL METER "OUT"

PART NUMBER	CETOP	GPM	HEIGHT
MH03FDO-FR0A-FR0A-A01	D03	10.5	1.75
MH05FDO-FR0A-FR0A-A01	D05	21	1.95

2. COUNTERBALANCE VALVE

- PILOT RATIO 3:1

PART NUMBER	CETOP	GPM	HEIGHT	PSI RANGE
MH03CDW-CB3H-CB3H-A02	D03	10.5	1.57	1000-4000
MH05CDW-CB3H-CB3H-A01	D05	21	1.95	2000-5000

3. LOCK VALVE

- PILOT RATIO 3:1

PART NUMBER	CETOP	GPM	HEIGHT
MH03CDW-CO20-CO20-A02	D03	10.5	1.57
MH05CDW-CO20-CO20-A01	D05	21	1.95

4. CROSS-OVER RELIEF (A - B)

PART NUMBER	CETOP	GPM	HEIGHT	PSI RANGE
MH03RDH-RP0A-RP0A-A01	D03	10.5	1.75	100-3000
MH05RDH-RP0A-RP0A-A01	D05	21	1.95	100-3000

5. PRESSURE RELIEF P TO T PORT

- INCLUDES 1/4 NPT GAUGE PORT

PART NUMBER	CETOP	GPM	HEIGHT	PSI RANGE
MH03RPH-RD5A-N02-A01	D03	10.5	1.75	100-3000
MH05RPH-RD5A-N02-A01	D05	21	1.95	100-3000

6. PRESSURE REDUCING ON "P" PORT

- INCLUDES 1/4 NPT GAUGE PORT

PART NUMBER	CETOP	GPM	HEIGHT	PSI RANGE
MH03PPW-PD0A-A02	D03	10.5	1.57	100-3000
MH05PPW-PD0A-A01	D05	21	1.95	100-3000

7. DERIVATIVE CIRCUIT

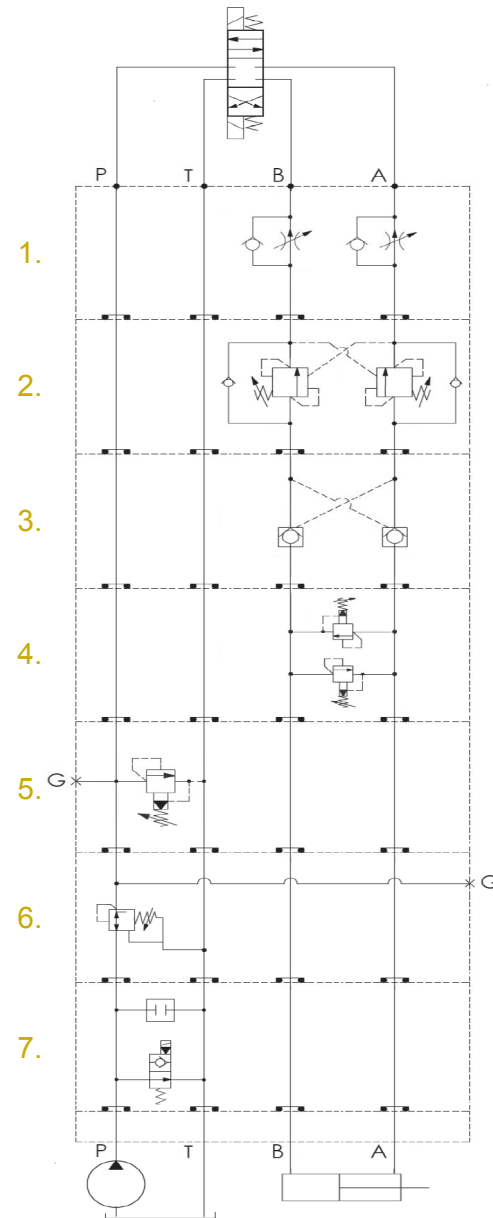
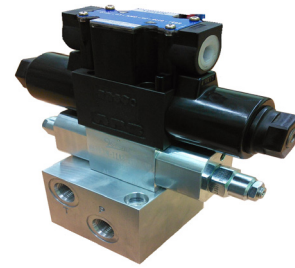
- COIL MUST BE ORDERED SEPARATELY. USES EC04W

PART NUMBER	CETOP	GPM	HEIGHT
MH03RPJ-10A2-EP02	D03	10.5	1.75
MH05RPD-CP00-EP02	D05	21	1.95

BOLT KITS

CETOP D03	PART NUMBER	LENGTH
	MBK01-325	1,57" + DIR. VLV.
	MBK01-350	1,75" + DIR. VLV.
	MBK01-490	1,57" + 1,57" + DIR. VLV.
	MBK01-500	1,57" + 1,75" + DIR. VLV.
	MBK01-525	1,75" + 1,75" + DIR. VLV.

CETOP D05	PART NUMBER	LENGTH
	MBK03-350	1,95" + DIR. VLV.
	MBK03-550	1,95" + 1,95" + DIR. VLV.



SUBPLATES

CAST IRON

- 5000 PSI MAXIMUM PRESSURE
- IMPERIAL THREAD

PART NUMBER	CETOP	DESCRIPTION
DSGM-01Y-3090	D03	3/8" NPT BOTTOM PORT
DSGM-01R-3090		3/8" NPT SIDE PORT
DSGM-03X-2190	D05	1/2" NPT BOTTOM
DSGM-03Y-2190		3/4" NPT BOTTOM
DHGM-04X-2090	D07	3/4" NPT BOTTOM
DHGM-06-5090	D08	3/4" NPT BOTTOM
DHGM-06X-5090		1" NPT BOTTOM

ALUMINUM

- 3000 PSI MAXIMUM PRESSURE
- IMPERIAL THREAD

PART NUMBER	CETOP	DESCRIPTION
SPA03S06S	D03	SAE 06 SIDE PORT
SPA05S08S	D05	SAE 08 SIDE PORT
SBR12830	D03	SAE 08 SIDE & BOTTOM PORT WITH RELIEF CAVITY C10-2 *
SPA05S08SBT10	D05	SAE 08 SIDE & BOTTOM WITH RELIEF CAVITY T10-A *

*SELECT A RELIEF TO GO WITH THIS MODELS

MANIFOLDS

- MADE IN ALUMINUM
- 3000 PSI MAXIMUM PRESSURE
- DUCTILE IRON AVAILABLE
- CUSTOM MANIFOLD AVAILABLE ON DEMAND

CETOP D03

- P & T PORTS: SAE 10
- A & B PORTS: SAE 08
- USE RELIEF VME06-EN-3.0 IF NEEDED

CETOP D05

- P & T PORTS: SAE 12
- A & B PORTS: SAE 10
- USE RELIEF RP3A-20CL IF NEEDED

BUILD THE MODEL NUMBER YOU NEED

CIRCUIT	CETOP	NB. OF STATIONS	RELIEF OPTION
PARALLEL EAM	D03 263	1 to 8	NO RELIEF Y
SERIE EAMS	D05 265		WITH RELIEF CAVITY Z

DESCRIPTION OF YOUR NEED			
MANIFOLD	SERIE	D05	3 STATIONS WITH RELIEF CAVITY
# MODEL			
EAMS	265	3	Y

