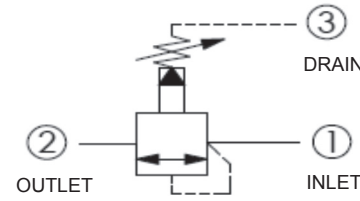


UNLOADING

- 5000 PSI MAXIMUM PRESSURE
- 100-3000 PSI ADJUSTMENT RANGE

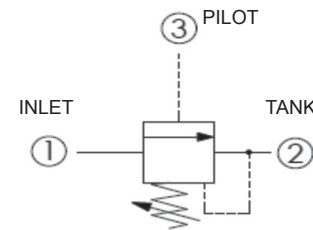
PART NUMBER	PSI RANGE	CAVITY
DF-PWE-00-0425	50-425	C10-3
DF-PWE-00-1500	425-1500	



SEQUENCE

- 5000 PSI MAXIMUM PRESSURE
- 100-3000 PSI ADJUSTMENT RANGE

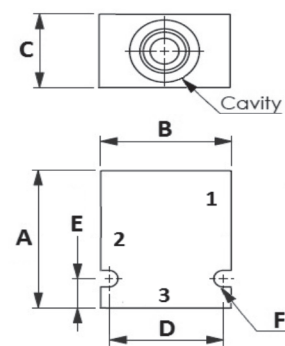
PART NUMBER	MAX GPM	CAVITY	SUN NO
SP11A30AL	15	T-11A	RSDC-LAN
SP2A30AL	30	T-2A	RSFC-LAN
SP17A30AL	60	T-17A	RSHC-LAN
SP19A30AL	120	T-19A	RSJC-LAN



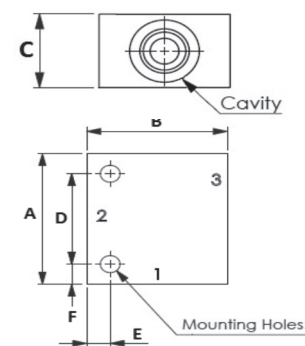
LINE MOUNT BODIES

- MADE IN ALUMINUM
- 3000 PSI MAXIMUM PRESSURE
- DUCTILE IRON AVAILABLE ON DEMAND

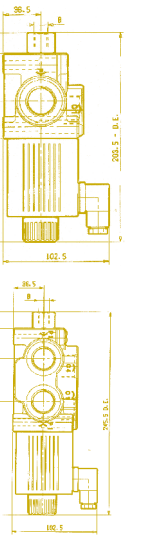
PART NUMBER	CAVITY	PORTS 1 & 2	PORT 3	SUN NO	DIMENSIONS						
					A	B	C	D	E	F	HOLES (2)
30102354	C10-3	SAE 08	SAE 08		2.5	2.5	1.5	2.25	0.38	0.28	-
30102576	C16-3	SAE 12	SAE 12		4.0	4.0	2.0	3.38	0.88	-	0.38
11A-S-90-S-8	T-11A	SAE 08	SAE 06	ECJ	3.0	2.75	1.26	2.09	0.38	0.44	0.34
2A-S-90-S-12	T-2A	SAE 12	SAE 06	BCL	3.25	3.0	1.5	2.25	0.5	0.5	0.42
17A-S-90-S-16	T-17A	SAE 16	SAE 06	HCM	4.25	4.0	2.36	2.75	0.75	0.75	
19A-S-90-S-20	T-19A	SAE 20	SAE 06	KCN	5.0	5.0	3.0	4.0	0.5	0.5	



C**-3 BODIES



T**A BODIES

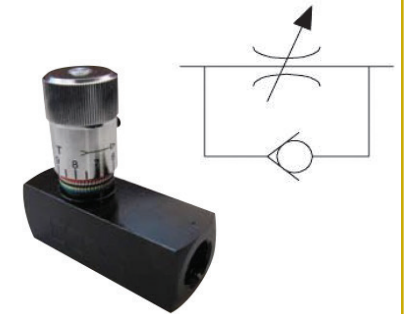


FLOW CONTROLS VALVES

IN-LINE FLOW CONTROL VALVES

- CARBON STEEL BODY
- DESIGNED TO PROVIDE PRECISION FLOW CONTROL & SHUT OFF IN ONE FLOW DIRECTION & PROVIDE FREE FLOW IN THE OPPOSITE DIRECTION
- COLOR BANDS ALLOW FAST RETURN TO A PREVIOUS SETTING
- SET SCREW LOCKS VALVE TO ANY SETTING
- OPERATING TEMP RANGE -20°F THROUGH 210°F

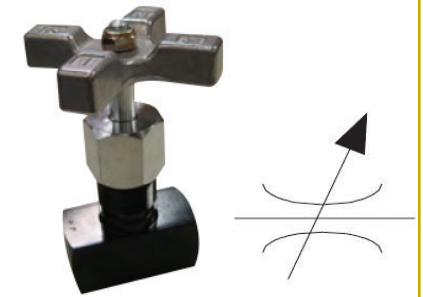
PART NUMBER	PORT SIZE	MAX PSI	MAX GPM
WFC-400	1/4 NPT	5000	5
WFC-600	3/8 NPT	5000	8
WFC-800	1/2 NPT	5000	15
WFC-1200	3/4 NPT	3000	25
WFC-1600	1 NPT	3000	40



IN-LINE NEEDLE VALVES

- CARBON STEEL BODY
- DESIGNED TO PROVIDE PRECISION FLOW CONTROL
- OPERATING TEMP RANGE -20°F THROUGH 210°F

PART NUMBER	PORT SIZE	MAX PSI	MAX GPM
WNV-400	1/4 NPT	5000	5
WNV-600	3/8 NPT	5000	8
WNV-800	1/2 NPT	5000	15
WNV-1200	3/4 NPT	3000	25
WNV-1600	1 NPT	3000	40



3 WAY FLOW CONTROL VALVES

- 30 GPM MAXIMUM FLOW
- 3000 PSI MAXIMUM PRESSURE
- 180°F MAX TEMP
- FILTRATION 17/14/19
- FOR USE WITH MINERAL BASED HYDRAULIC FLUID
- SIDE PORT CONFIGURATION
- 100% TESTED
- EXTERNAL SEALS ON ROTARY SPOOL PREVENT CONTAMINATION FROM LOCKING UP SPOOL

PART NUMBER	PORT SIZE	CONTROL FLOW	DESCRIPTION
W1950-16	1/2 NPT	0-16 GPM	-
WR-1950-16	1/2 NPT	0-16 GPM	WITH RELIEF
W1975-30	3/4 NPT	0-30 GPM	-
WR-1975-30	3/4 NPT	0-30 GPM	WITH RELIEF

SIDE PORTED	TOP PORTED	PORT SIZE	CONTROL FLOW
RD-1937-8	RD-137-8	3/8 NPT	0-8 GPM
RD-1950-8	RD-150-8	1/2 NPT	0-8 GPM
RD-1950-16	RD-150-16	1/2 NPT	0-16 GPM
RD-1975-16	RD-175-16	3/4 NPT	0-16 GPM
RD-1975-30	RD-175-30	3/4 NPT	0-30 GPM
RD-1908-8	RD-108-8	SAE 08	0-8 GPM
RD-1912-30	RD-112-30	SAE 12	0-30 GPM

FOLLOWING MODELS WITH BUILT IN RELIEF

RDRS-1950-16	RDRS-150-16	1/2 NPT	0-16 GPM
RDRS-1975-30	RDRS-175-30	3/4 NPT	0-30 GPM

