

## A10V SWASHPLATE AXIAL PISTON PUMP

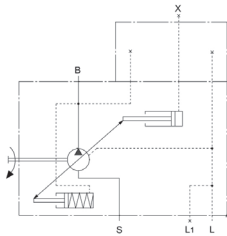
### USED FOR HYDRAULIC DRIVES IN OPEN LOOP CIRCUITS

- ADJUST THE ANGLE OF SWASHPLATE TO REALIZE THE STEP LESS VARIABLE.
- GOOD SUCTION CHARACTERISTIC.
- HAVE THE STRUCTURAL DESIGN OF COMPACT, LIGHTWEIGHT, LOW NOISE CHARACTERISTICS.
- THE SENSITIVITY OF CONTROL SYSTEM.
- FLOW IS PROPORTIONAL TO THE DRIVE SPEED AND TO THE DISPLACEMENT.
- NOMINAL PRESSURE REACH TO **400 PSI**.
- LONG SERVICE LIFE, HIGH-PRECISION BEARINGS.
- HYDROSTATIC BALANCE SLIPPER, IMPROVE THE LIFE OF PUMP.
- REAR OR SIDE PORTS
- AXIAL AND RADIAL LOADING OF DRIVE SHAFT POSSIBLE

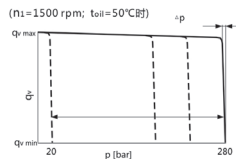
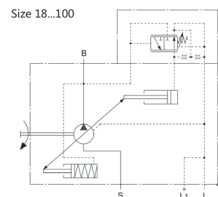


PART NUMBER	DISPLACEMENT		SHAFT			MOUNT	MAX SPEED	P <sub>MAX</sub>	MAX. OUTPUT FLOW	MAX. POWER	MAX. TORQUE	WEIGH	
	Cu. In	CC	SPINE	KEYED	SIZE	SAE 2 BOLT a b c	RPM	PSI	GPM @ 1500 RPM	HP @ 1500 RPM	LB/FT. VGMAX	LBS	KG.
CUI1018D31RPKC8N00	1.1	18		X	3/4"	X	3300	5000	7.13	16.9	59.08	26,46	12
CUI1018D31RPSC8N00			X										
CUI1028D31RPKC8N00	1,71	28		X	7/8"	X	3000	5000	11.1	26.82	92.2	33,07	15
CUI1028D31RPSC8N00			X										
CUI1045D31RPKC8N00	2,75	45		X	1"	X	2600	5000	17.96	42.91	147.51	46,3	21
CUI1045D31RPSC8N00			X										
CUI1071D31RPKC8N00	4,33	71		X	1 1/4"	X	2200	5000	28.27	67.05	233.07	72,75	33
CUI1071D31RPSC8N00			X										

DG Two speed Remote

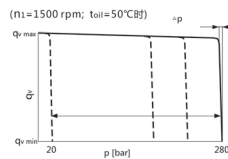
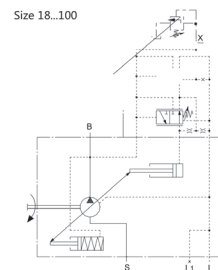


DR Pressure Comp.



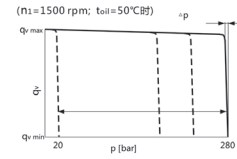
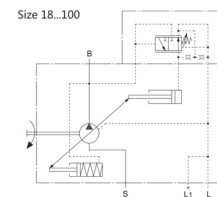
n = 1500 rpm; t<sub>oil</sub> = 50°C  
B 350bar

DRG Pressure comp. with Remote



n = 1500 rpm; t<sub>oil</sub> = 50°C  
B 350bar

DFR/DFR1 Load sense



n = 1500 rpm; t<sub>oil</sub> = 50°C  
B 350bar

DFLR Pressure, Flow, H.P. control

