



**BM2W series** motor is a wheel motor with radial bearing which can bear bigger radial forces.

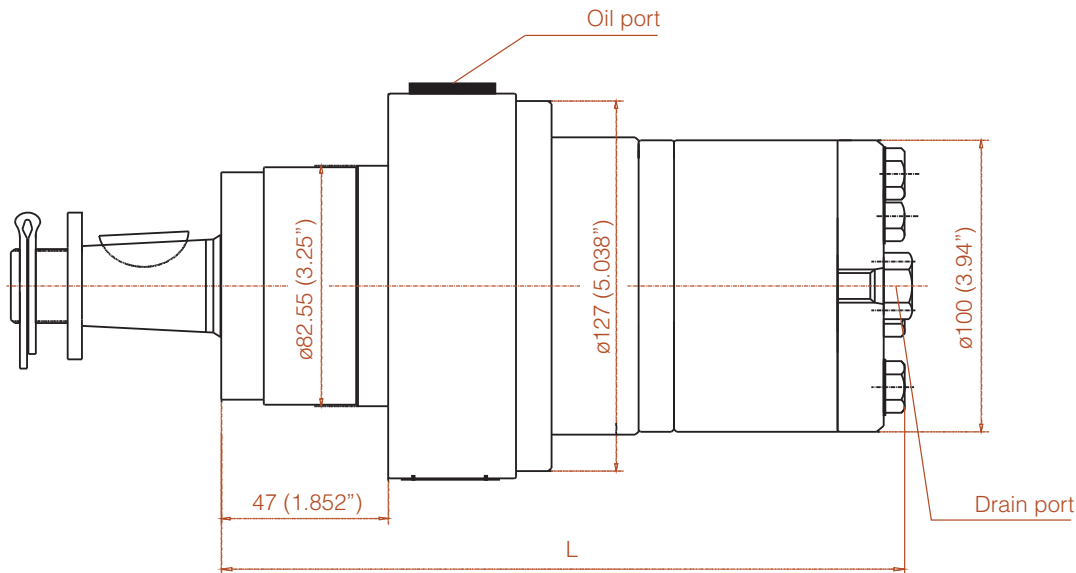
### CHARACTERISTIC FEATURES

- It adopts the gerolor design. Has higher efficiency.
- Credible design for shaft seal, which can bear high pressure and can be used in parallel or in series application.
- Direction of shaft speed can be controlled easily and smoothly.
- Best efficiency and economy in medium load applications.

## Main Specification

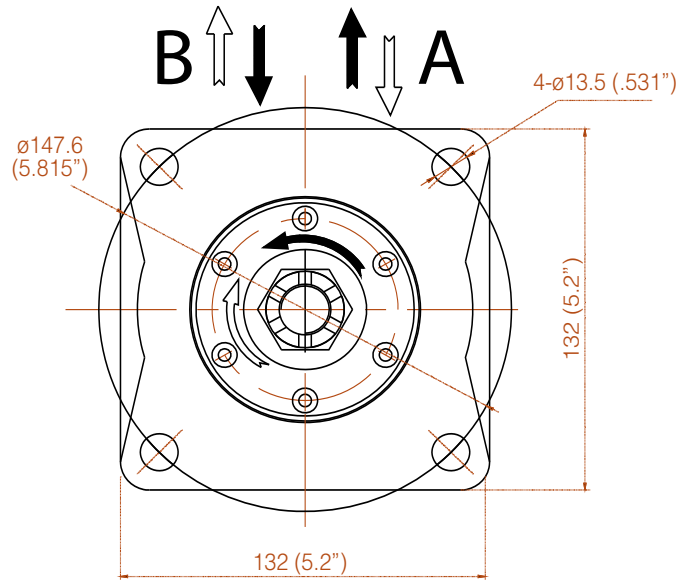
The main specification and performance data are same as BM2, please refer to the BM2 section on page 20-23.

### BM2W Figuration

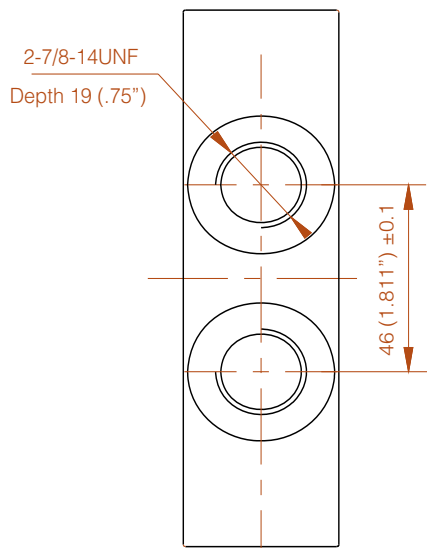


Displacement	50	63	80	100	125	160	200	250	315	400	500
L	157	160	163	166	171	177	185	194	205	220	238
	6.181	6.299	6.417	6.535	6.732	6.969	7.283	7.638	8.070	8.661	9.370

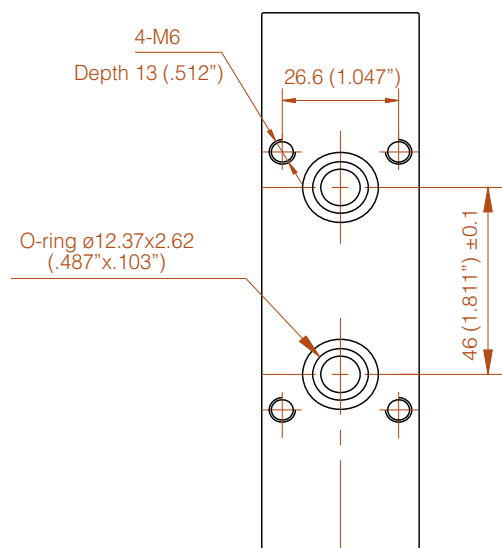
## Flange A



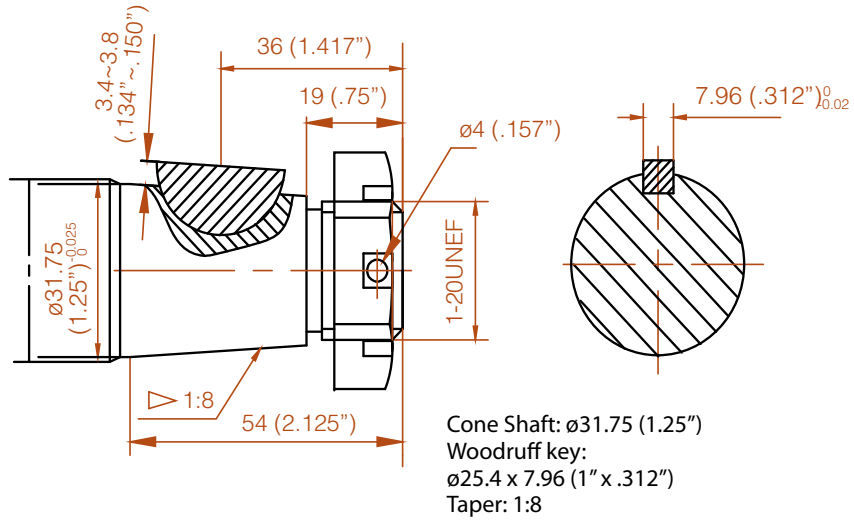
## Oil Port A



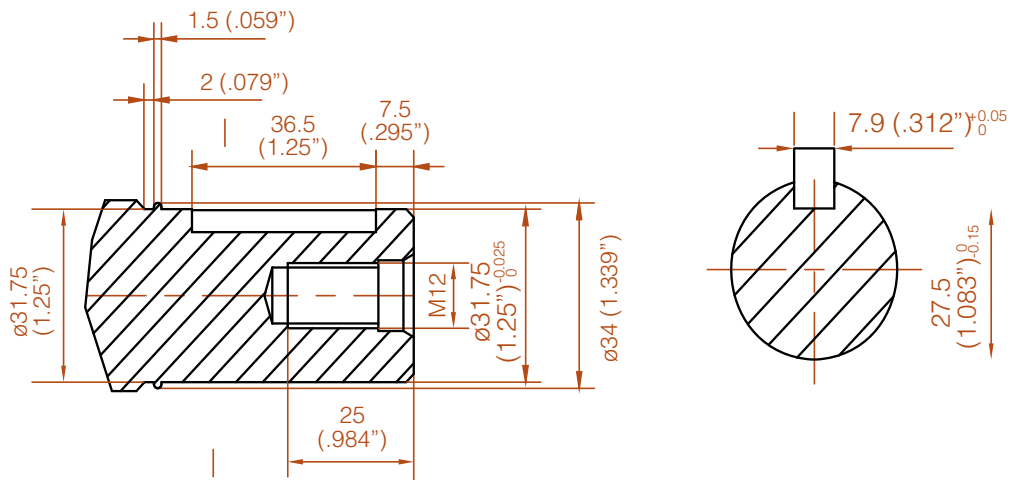
## Oil Port C



## Shaft A



## Shaft C



# BM2W Code number & Order information

Choose an option for each category

**BM2W**

--	--	--	--	--	--	--	--

**Figuration**

H - Standard, wheel mount

**Displacement (cc)**

A - 50   B - 63   C - 80   D - 100   E - 125  
 F - 160   G - 200   H - 250   I - 315   J - 400   K - 500

**Flange & Pilot (mm)**

A - Standard

**Shaft & Key (mm)**

A - Cone shaft;  $\varnothing 31.75 \times 57$  (1.25"x2.244"),  
 Taper: 1 : 8, Link thread : 1/4-20UNC, Woodruff Key: 25.4x7.96 (1"x.312")  
 C - Cylinder shaft:  $\varnothing 31.75 \times 56$  (1.25"x2.205"),  
 Parallel Key: 7.96x7.96x36 (.312"x.312"x1.417"), Link thread: M12

**Oil Port**

A - 2-7/8-14UNF SAE   C - O-ring 2- $\varnothing 12.37 \times 2.62$  (.487"x.103")

**Link Thread on Port Surface**

A - None   C - 4-M6

**Drain Port**

A - None   D - 7/16-20UNF

**Special**

A - None

**Order example: BM2WHDACAADA**

Other configuration and/or mounting types are available upon request.