

VDM8 MANUAL VALVES

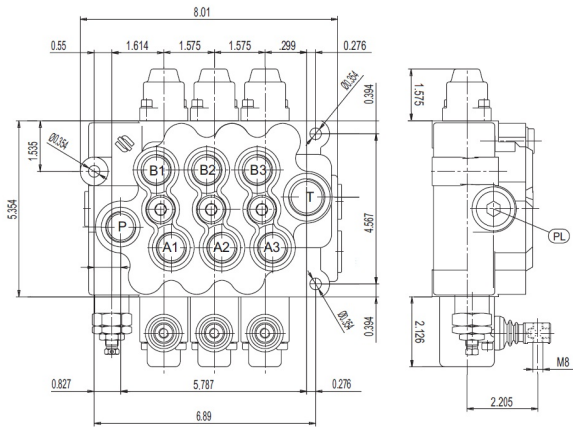
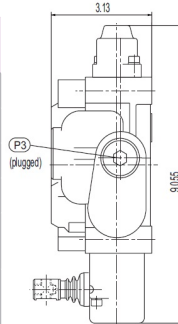
- LOADCHECK ON EVERY SECTION
- DOUBLE ACTING SPOOL, SPRING RETURN WITH LEVERS
- OPEN/CLOSED CENTER. POWER BEYOND OPTION
- HANDLES INCLUDED
- RELIEF SET TO 2550 PSI

PART NUMBER	NB OF SPOOL	GPM MAX	PSI MAX	PORTS
623200110	1	24	5000	P, A & B: SAE 10 T: SAE 12
623200120	2			
623200130	3			
623200140	4			
623200150	5			



POPULAR PARTS

PART NUMBER	DESCRIPTION
R23500300	DETENT KIT IN & OUT
R20272590	SPOOL SEALKIT (PER SPOOL)
R23575070	SPRING RETURN KIT
R20287910	LEVERBOX
795428901	POWER BEYOND/ CLOSED CENTER (VALVE)
795429300	POWER BEYOND/ CLOSED CENTER (2+ SPOOL VALVE)



BF40, BF70 & BF90 MANUAL VALVES

INTEGRATED PRESSURE COMPENSATED FLOW CONTROL (SEND EXCESS FLOW TO TANK)

- ZINC COATED
- DOUBLE ACTING SPOOL, SPRING RETURN WITH LEVERS
- OPEN/CLOSED CENTER. POWER BEYOND OPTION
- HANDLES INCLUDED
- RELIEF SET TO 2550 PSI

PART NUMBER	NB OF SPOOL	GPM MAX	PSI MAX	PORTS
91411013	1	10.5	4700	SAE 08
914394	2			
91411014	3			
91411015	4			
91411016	5			
91411017	6			
93811005	1	18.5	4700	P, A & B: SAE 10 T: SAE 12
93811006	2			
93811007	3			
93811008	4			
93811009	5			
9381005	1	24	4700	SAE 10

