

CETOP D03 VALVES (ISO NG6)

- INTERCHANGEABLE WITH CETOP AND ISO VALVES ON THE MARKET
- BOLT KIT AND DIN CONNECTORS WITH LED INCLUDED
- CSA, UL AND CE PROOF
- OTHER SPOOL MODELS AND VOLTAGE AVAILAILBLE
- SOFTSHIFT VALVES AVAILABLE



DIN CONN

TERMINAL BOX

MAXIMUM PRESSURE: 4560 PSI  
 MAXIMUM BACK PRESSURE: 2320 PSI

HYDRO CUSTOM PART NUMBER	VOLTAGE	MAX GPM @3600 PSI	SPOOL MODEL	MAX GPM @3600 PSI	VOLTAGE	YUKEN PART NO
4WE6-D-6X/ED12-LL	12V DC DIN	18		21	12V DC DIN	DSG01-2B2-D12N
4WE6-D-6X/ED12-BL	12V DC BOX				12V DC BOX	DSG01-2B2-D12
4WE6-D-6X/ED24-LL	24V DC DIN				24V DC DIN	DSG01-2B2-D24N
4WE6-D-6X/ED24-BL	24V DC BOX				24V DC BOX	DSG01-2B2-D24N
4WE6-D-6X/ER110-LL	120V AC DIN				120V AC DIN	DSG01-2B2-A120N
4WE6-D-6X/ER110-BL	120 V AC BOX				120 V AC BOX	DSG01-2B2-A120
4WE6-E-6X/ED12-LL	12V DC DIN	21		26	12V DC DIN	DSG01-3C2-D12N
4WE6-E-6X/ED12-BL	12V DC BOX				12V DC BOX	DSG01-3C2-D12
4WE6-E-6X/ED24-LL	24V DC DIN				24V DC DIN	DSG01-3C2-D24N
4WE6-E-6X/ED24-BL	24V DC BOX				24V DC BOX	DSG01-3C2-D24N
4WE6-E-6X/ER110-LL	120V AC DIN				120V AC DIN	DSG01-3C2-A120N
4WE6-E-6X/ER110-BL	120 V AC BOX				120 V AC BOX	DSG01-3C2-A120
4WE6-H-6X/ED12-LL	12V DC DIN	13		24	12V DC DIN	DSG01-3C3-D12N
4WE6-H-6X/ED12-BL	12V DC BOX				12V DC BOX	DSG01-3C3-D12
4WE6-H-6X/ED24-LL	24V DC DIN				24V DC DIN	DSG01-3C3-D24N
4WE6-H-6X/ED24-BL	24V DC BOX				24V DC BOX	DSG01-3C3-D24N
4WE6-H-6X/ER110-LL	120V AC DIN				120V AC DIN	DSG01-3C3-A120N
4WE6-H-6X/ER110-BL	120 V AC BOX				120 V AC BOX	DSG01-3C3-A120
4WE6-J-6X/ED12-LL	12V DC DIN	21		24	12V DC DIN	DSG01-3C4-D12N
4WE6-J-6X/ED12-BL	12V DC BOX				12V DC BOX	DSG01-3C4-D12
4WE6-J-6X/ED24-LL	24V DC DIN				24V DC DIN	DSG01-3C4-D24N
4WE6-J-6X/ED24-BL	24V DC BOX				24V DC BOX	DSG01-3C4-D24N
4WE6-J-6X/ER110-LL	120V AC DIN				120V AC DIN	DSG01-3C4-A120N
4WE6-J-6X/ER110-BL	120 V AC BOX				120 V AC BOX	DSG01-3C4-A120
4WE6-G-6X/ER12-LL	12V DC DIN	13		10	12V DC DIN	DSG01-3C60-D12N
4WE6-G-6X/ER12-BL	12V DC BOX				12V DC BOX	DSG01-3C60-D12
4WE6-G-6X/ER24-LL	24V DC DIN				24V DC DIN	DSG01-3C60-D24N
4WE6-G-6X/ER24-BL	24V DC BOX				24V DC BOX	DSG01-3C60-D24N
4WE6-G-6X/ER110-LL	120V AC DIN				120V AC DIN	DSG01-3C60-A120N
4WE6-G-6X/ER110-BL	120 V AC BOX				120 V AC BOX	DSG01-3C60-A120

SUBPLATES

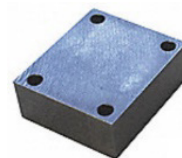
- 10-24 UNC THREADS



PART NUMBER	DESCRIPTION
SPA03-BP-S08	ALU, 3000 PSI, SAE-08, BOTTOM PORTS
SPA03-SB-S08	ALU, 3000 PSI, ALL PORTS ON SIDE. P & T ALSO ON BOTTOM
SPA03-SB-S08-C10-2	SAME AS SPA03-SB-S08 PLUS C10-2 RELIEF CAVITY
DSGM01-X-3090	CAST IRON, 5000 PSI, 1/4 NPT BOTTOM PORTS
DSGM01-Y-3090	CAST IRON, 5000 PSI, 3/8 NPT BOTTOM PORTS

COVER PLATES

- 3000 PSI, ALUMINUM MADE  
 - BOLT KIT INCLUDED



PART NUMBER	DESCRIPTION
CPA03-XX	ALL PORTS BLOCKED
CPA03-PT	OIL PASSAGE FROM P TO T