

CETOP D05 VALVES (ISO NG10)

- INTERCHANGEABLE WITH CETOP AND ISO VALVES ON THE MARKET
- BOLT KIT AND DIN CONNECTORS WITH LED INCLUDED
- CSA, UL AND CE PROOF
- OTHER SPOOL MODELS AND VOLTAGE AVAILAILBLE
- SOFTSHIFT VALVES AVAILABLE



DIN CONN

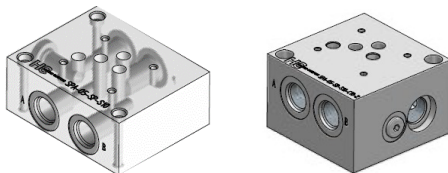
TERMINAL BOX

MAXIMUM PRESSURE: 4560 PSI  
 MAXIMUM BACK PRESSURE: 2320 PSI

| HYDRO CUSTOM PART NUMBER | VOLTAGE      | MAX GPM @3600 PSI | SPOOL MODEL | MAX GPM @3600 PSI | VOLTAGE      | YUKEN PART NO    |
|--------------------------|--------------|-------------------|-------------|-------------------|--------------|------------------|
| 4WE10-D-3X/CD12-LL       | 12V DC DIN   | 26                |             | 32                | 12V DC DIN   | DSG03-2B2-D12N   |
| 4WE10-D-3X/CD12-BL       | 12V DC BOX   |                   |             |                   | 12V DC BOX   | DSG03-2B2-D12    |
| 4WE10-D-3X/CD24-LL       | 24V DC DIN   |                   |             |                   | 24V DC DIN   | DSG03-2B2-D24N   |
| 4WE10-D-3X/CD24-BL       | 24V DC BOX   |                   |             |                   | 24V DC BOX   | DSG03-2B2-D24N   |
| 4WE10-D-3X/CR110-LL      | 120V AC DIN  |                   |             |                   | 120V AC DIN  | DSG03-2B2-A120N  |
| 4WE10-D-3X/CR110-BL      | 120 V AC BOX |                   |             |                   | 120 V AC BOX | DSG03-2B2-A120   |
| 4WE10-E-3X/CD12-LL       | 12V DC DIN   | 32                |             | 26                | 12V DC DIN   | DSG03-3C2-D12N   |
| 4WE10-E-3X/CD12-BL       | 12V DC BOX   |                   |             |                   | 12V DC BOX   | DSG03-3C2-D12    |
| 4WE10-E-3X/CD24-LL       | 24V DC DIN   |                   |             |                   | 24V DC DIN   | DSG03-3C2-D24N   |
| 4WE10-E-3X/CD24-BL       | 24V DC BOX   |                   |             |                   | 24V DC BOX   | DSG03-3C2-D24N   |
| 4WE10-E-3X/CR110-LL      | 120V AC DIN  |                   |             |                   | 120V AC DIN  | DSG03-3C2-A120N  |
| 4WE10-E-3X/CR110-BL      | 120 V AC BOX |                   |             |                   | 120 V AC BOX | DSG03-3C2-A120   |
| 4WE10-H-3X/CD12-LL       | 12V DC DIN   | 26                |             | 24                | 12V DC DIN   | DSG03-3C3-D12N   |
| 4WE10-H-3X/CD12-BL       | 12V DC BOX   |                   |             |                   | 12V DC BOX   | DSG03-3C3-D12    |
| 4WE10-H-3X/CD24-LL       | 24V DC DIN   |                   |             |                   | 24V DC DIN   | DSG03-3C3-D24N   |
| 4WE10-H-3X/CD24-BL       | 24V DC BOX   |                   |             |                   | 24V DC BOX   | DSG03-3C3-D24N   |
| 4WE10-H-3X/CR110-LL      | 120V AC DIN  |                   |             |                   | 120V AC DIN  | DSG03-3C3-A120N  |
| 4WE10-H-3X/CR110-BL      | 120 V AC BOX |                   |             |                   | 120 V AC BOX | DSG03-3C3-A120   |
| 4WE10-J-3X/CD12-LL       | 12V DC DIN   | 32                |             | 24                | 12V DC DIN   | DSG03-3C4-D12N   |
| 4WE10-J-3X/CD12-BL       | 12V DC BOX   |                   |             |                   | 12V DC BOX   | DSG03-3C4-D12    |
| 4WE10-J-3X/CD24-LL       | 24V DC DIN   |                   |             |                   | 24V DC DIN   | DSG03-3C4-D24N   |
| 4WE10-J-3X/CD24-BL       | 24V DC BOX   |                   |             |                   | 24V DC BOX   | DSG03-3C4-D24N   |
| 4WE10-J-3X/CR110-LL      | 120V AC DIN  |                   |             |                   | 120V AC DIN  | DSG03-3C4-A120N  |
| 4WE10-J-3X/CR110-BL      | 120 V AC BOX |                   |             |                   | 120 V AC BOX | DSG03-3C4-A120   |
| 4WE10-G-3X/CD12-LL       | 12V DC DIN   | 21                |             | 18                | 12V DC DIN   | DSG03-3C60-D12N  |
| 4WE10-G-3X/CD12-BL       | 12V DC BOX   |                   |             |                   | 12V DC BOX   | DSG03-3C60-D12   |
| 4WE10-G-3X/CD24-LL       | 24V DC DIN   |                   |             |                   | 24V DC DIN   | DSG03-3C60-D24N  |
| 4WE10-G-3X/CD24-BL       | 24V DC BOX   |                   |             |                   | 24V DC BOX   | DSG03-3C60-D24N  |
| 4WE10-G-3X/CR110-LL      | 120V AC DIN  |                   |             |                   | 120V AC DIN  | DSG03-3C60-A120N |
| 4WE10-G-3X/CR110-BL      | 120 V AC BOX |                   |             |                   | 120 V AC BOX | DSG03-3C60-A120  |

SUBPLATES

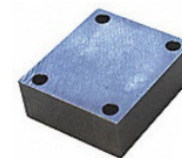
- 1/4-20 UNC THREADS



| PART NUMBER        | DESCRIPTION   |
|--------------------|---|
| SPA05-SP-S10       | ALU, 3000 PSI, SAE-10, SIDE PORTS   |
| SPA05-SB-S10-C10-2 | ALU, 3000 PSI, SIDE PORTS. P & T ALSO ON BOTTOM, SAE-10 C10-2 RELIEF CAVITY |
| DSGM03-X-2190      | CAST IRON, 5000 PSI, 1/2 NPT, BOTTOM PORTS                                  |
| DSGM03-Y-2190      | CAST IRON, 5000 PSI, 3/4 NPT, BOTTOM PORTS                                  |

COVER PLATES

- 3000 PSI, ALUMINUM MADE  
 - BOLT KIT INCLUDED



| PART NUMBER | DESCRIPTION             |
|-------------|-------------------------|
| CPA05-XX    | ALL PORTS BLOCKED       |
| CPA05-PT    | OIL PASSAGE FROM P TO T |