

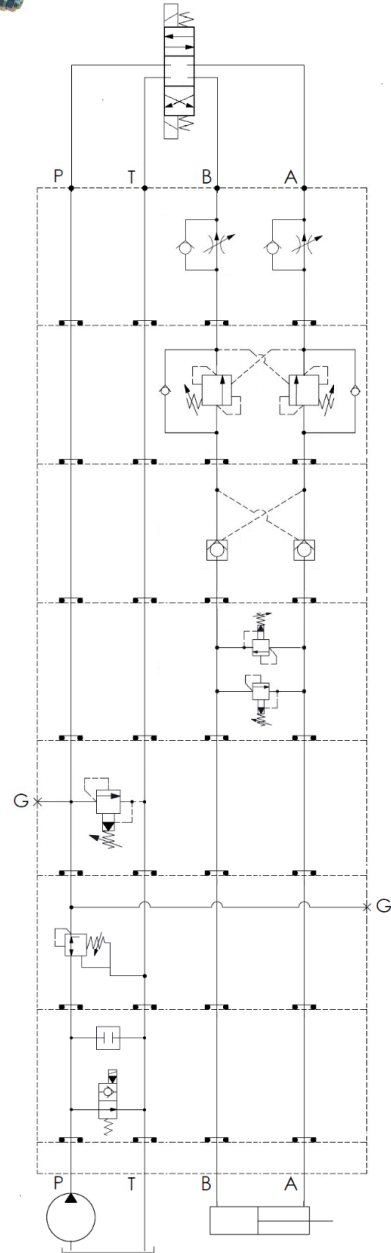
MODULAR VALVES

- COMPACT DESIGN
- MULTIPLE CIRCUITS
- STACKABLE
- AVAILABLE IN ALUMINUM OR STEEL
- LESS OVERCROWDING HOSE AND FITTING LOWERING THE AMOUNT OF LEAK POINT



FUNCTION	PART NUMBER	CETOP	MAX GPM	HEIGHT	PSI RANGE
FLOW CONTROL METER "OUT"	MH03FDO-FR0A-FR0A-A01	D03	10.5	1.75	N/A
	MH05FDO-5A2-5A2-A01	D05	21	1.95	
COUNTERBALANCE VALVE (PILOT RATIO 3:1)	MH03CDW-CB3H-CB3H-A02	D03	10.5	1.75	1000 - 4000
	MH05CDW-CB3H-CB3H-A01	D05	21	1.95	2000 - 5000
LOCK VALVE (PILOT RATIO 3:1)	MH03CDW-CO20-CO20-A02	D03	10.5	1.75	N/A
	MH05CDW-CO20-CO20-A01	D05	21	1.95	
CROSS-OVER RELIEF (A - B)	MH03RDH-RP0A-RP0A-A01	D03	10.5	1.75	100 - 3000
	MH05RDH-RP0A-RP0A-A01	D05	21	1.95	
PRESSURE RELIEF P TO T PORT	MH03RPH-10A2-N02-A01	D03	10.5	1.75	100 - 3000
	MH05RPH-RD5A-N02-A01	D05	21	1.95	
PRESSURE REDUCING ON "P" PORT	MHP03PPW-PD0A-A02	D03	10.5	1.75	100 - 3000
	MHP05PPW-PD0A-A01	D05	21	1.95	
DERIVATIVE CIRCUIT	MH03RPJ-10A2-EP02*	D03	10.5	1.75	N/A
	MH05RPD-CP00-EP02*	D05	21	1.95	

* COIL MUST BE ORDERED SEPARATELY. USES EC04W ON PAGE



BOLT KITS

CETOP D03	PART NUMBER	LENGTH
	MBK01-325	1.57" + DIR. VLV.
	MBK01-350	1.75" + DIR. VLV.
	MBK01-490	1.57" + 1.57" + DIR. VLV.
	MBK01-500	1.57" + 1.75" + DIR. VLV.
	MBK01-525	1.75" + 1.75" + DIR. VLV.

CETOP D05	PART NUMBER	LENGTH
	MBK03-350	1.95" + DIR. VLV.
	MBK03-550	1.95" + 1.95" + DIR. VLV.