

- MADE OF ALUMINUM
- 3500 PSI MAXIMUM PRESSURE
- INCLUDES MOUNTING KIT
- C10-2 CAVITY FOR RELIEF
- SAE-06 PRESSURE GAUGE PORT

OPTIONS

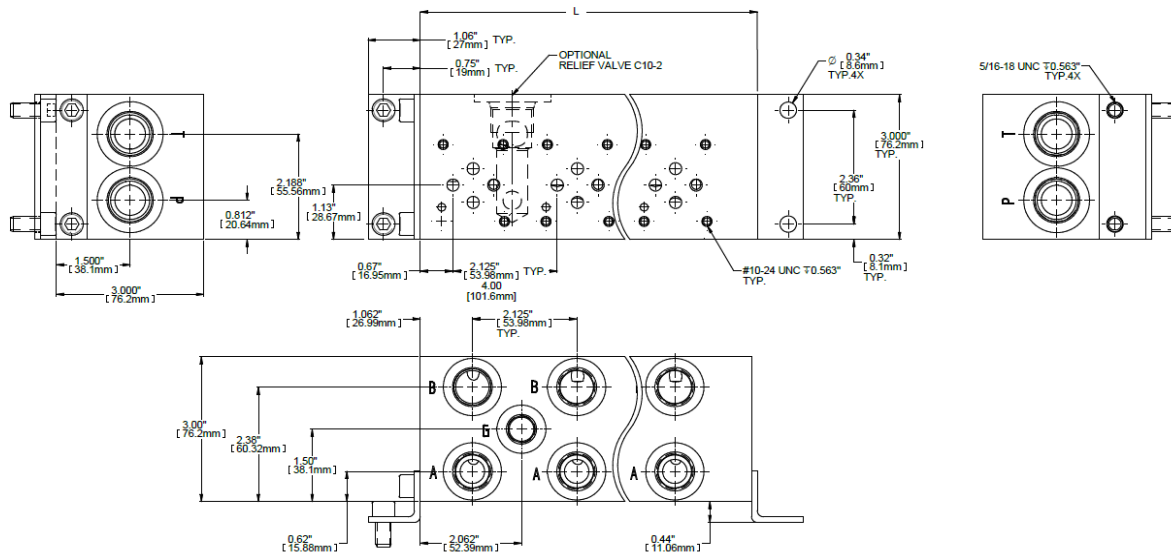
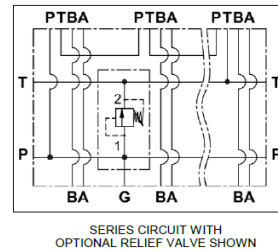
- NPT THREADS
- STEEL
- NUMBER OF STATIONS
- TYPE OF CAVITY FOR RELIEF



CETOP D03 / ISO 06 MANIFOLDS

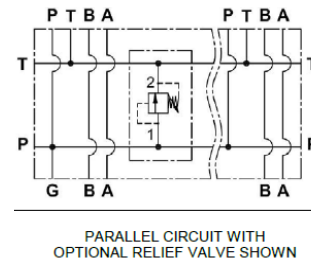
SERIES CIRCUIT

PART NUMBER	NUMBER OF STATIONS	PORTS		"L" DIM
		P & T	A & B	
BMA03 S02 S08 C10-2	2	SAE 10	SAE 08	4.25
BMA03 S03 S08 C10-2	3			6.37
BMA03 S04 S08 C10-2	4			8.50
BMA03 S05 S08 C10-2	5			10.62
BMA03 S06 S08 C10-2	6			12.75



PARALLEL CIRCUIT

PART NUMBER	NUMBER OF STATIONS	PORTS		"L" DIM
		P & T	A & B	
BMA03 P02 S08 C10-2	2	SAE 10	SAE 08	4.25
BMA03 P03 S08 C10-2	3			6.375
BMA03 P04 S08 C10-2	4			8.5
BMA03 P05 S08 C10-2	5			10.63
BMA03 P06 S08 C10-2	6			12.75



RELIEF & CAVITY PLUG

PART NUMBER	DESCRIPTION
DE-RVP-00-4000	RELIEF 1000-4000 PSI
CAV-PLUG-10-2	CAVITY PLUG

