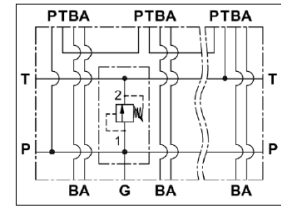


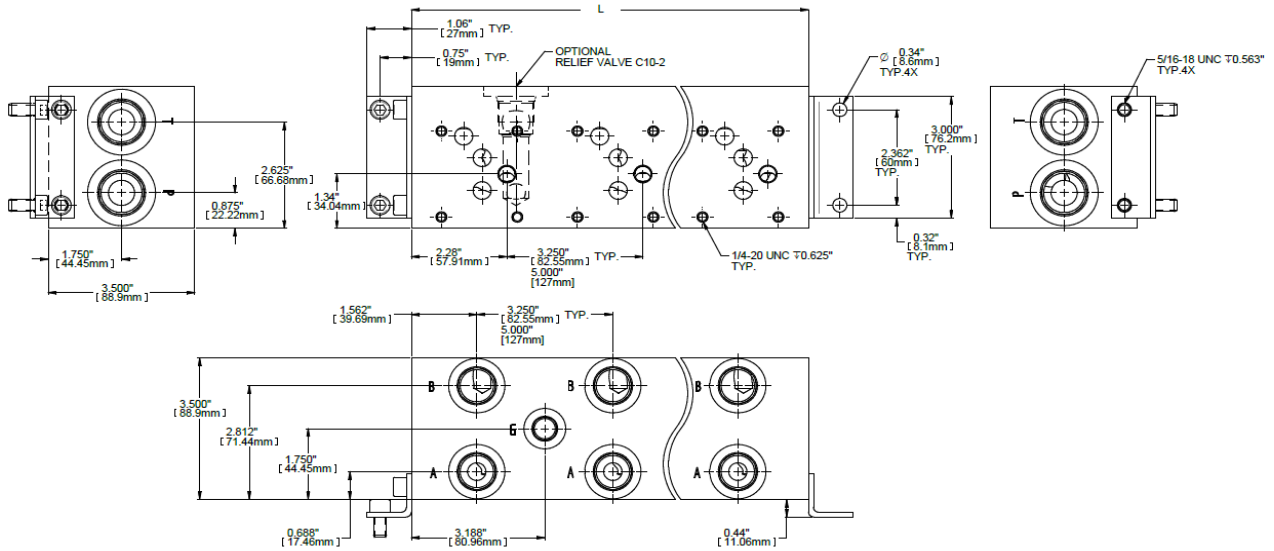
CETOP D05 / ISO 10 MANIFOLDS

- SERIES CIRCUIT

PART NUMBER	NUMBER OF STATIONS	PORTS		"L" DIM
		P & T	A & B	
BMA05 S02 S10 C10-2	2	SAE-12	SAE-10	6.75
BMA05 S03 S10 C10-2	3			9.75
BMA05 S04 S10 C10-2	4			13.00
BMA05 S05 S10 C10-2	5			16.25
BMA05 S06 S10 C10-2	6			19.5

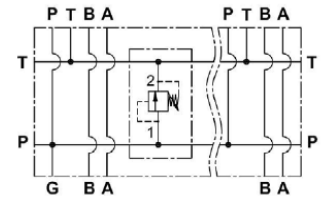


SERIES CIRCUIT WITH OPTIONAL RELIEF VALVE SHOWN



PARALLEL CIRCUIT

PART NUMBER	NUMBER OF STATIONS	PORTS		"L" DIM
		P & T	A & B	
BMA05 P02 S10 C10-2	2	SAE-12	SAE-10	6.50
BMA05 P03 S10 C10-2	3			9.75
BMA05 P04 S10 C10-2	4			13.00
BMA05 P05 S10 C10-2	5			16.25
BMA05 P06 S10 C10-2	6			19.5



PARALLEL CIRCUIT WITH OPTIONAL RELIEF VALVE SHOWN

RELIEF & CAVITY PLUG

PART NUMBER	DESCRIPTION
DE-RVP-00-4000	RELIEF 1000-4000 PSI
CAV-PLUG-10-2	CAVITY PLUG

