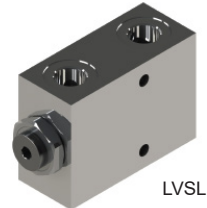
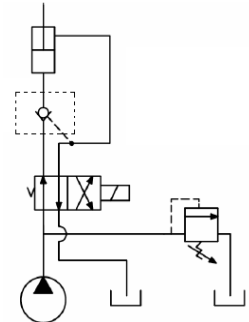


SINGLE PILOT OPERATED CHECK VALVES

PART NUMBER	PORTS	MAX GPM	MAX PSI	PILOT RATIO	SCHEMATIC	CONFIGURATION
PS-POC-B-N	1/4 NPT	10	3000	4 : 1		
PS-POC-B-S	SAE-06					
RD-1637	3/8 NPT	15	3000	4 : 1		
RD-1650	1/2 NPT	20				
LVPL-02	SAE-08	10.5	5075	6.2 : 1		
LVSL-02		9	3750	7 : 1		
LVSL-025	SAE-10	9		3750	7 : 1	



DOUBLE PILOT OPERATED CHECK VALVES

PART NUMBER	PORTS	MAX GPM	MAX PSI	PILOT RATIO	SCHEMATIC	CONFIGURATION
MD-POC-B-S	SAE-04	5	3000	6.7 : 1		
LVDL-01	SAE-06	5	3750			
LVDT-01		7	5075	4 : 1		
PD-POC-B-S	10	3000				
DD-POC-B-N	3/8 NPT		15	3750	7 : 1	
LVDL-02	SAE-08	9				
LVDT-02		12	3000	4 : 1		
RD-1450	1/2 NPT	20				
LVDL-03	SAE-10	16	3750	3.4 : 1		
RD-1475	3/4 NPT	30	3000	4 : 1		

