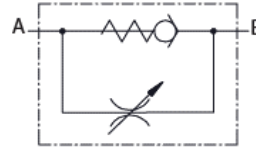


### IN-LINE FLOW CONTROL VALVES

#### FLOW CONTROL

- CONTROL FLOW IN ONE DIRECTION

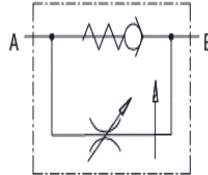
CODE	NPT	SAE	MAX GPM	MAX PSI
F420S	-	SAE4	3	5076
F400S	1/4	-	5	
F620S	-	SAE6		
F600S	3/8	-	11	
F820S	-	SAE8		
F800S	1/2	-	17	
F1020S	-	SAE10		
F1200S	3/4	-	32	
F1220S	-	SAE12		
F1600S	1	-	48	
F1620S	-	SAE16		



### FLOW CONTROL, PRESSURE COMPENSATED

- CONTROL FLOW IN ONE DIRECTION

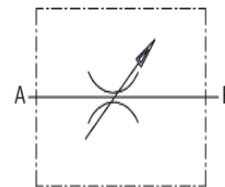
PART NUMBER	PORTS	MAX PSI	MAX GPM
FRC90-01-SAE6	SAE-06	3625	4.5
FRC90-02-SAE8	SAE-08		



### NEEDLE VALVES

- CONTROL FLOW IN BOTH DIRECTIONS

PART NUMBER	PORTS	MAX PSI	MAX GPM
NV-02	1/4 NPT	5000	5
NV-03	3/8 NPT		8
NV-04	1/2 NPT		15
FRB-90-03N	1/2 NPT		13



### 3 WAYS PRIORITY VALVE, EXCESS TO TANK, WITH KNOB

- 3000 PSI MAXIMUM PRESURE
- PRESSURE COMPENSATED

PART NUMBER	MAX GPM		PORTS
	INLET	CONTROL	
PVET-02	10.5	6.5	SAE-08
PVET-04	39	23.5	SAE-12
PVET-05	74	50	SAE-16

