

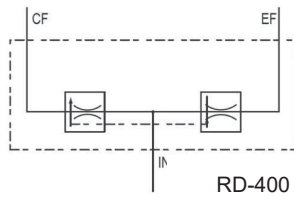
FIXED FLOW PRIORITY DIVIDERS

- 3000 PSI MAXIMUM PRESSURE
- DUCTILE IRON AVAILABLE ON DEMAND

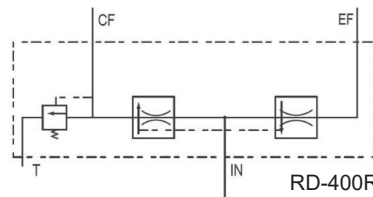
PART NO	FIXED FLOW	RELIEF	INLET & EXCESS PORT	CONTROL FLOW PORT
RD-405-3	3 GPM	NO	3/4 NPT	1/2 NPT
RD-405-6	6 GPM			
RD-405-R3	3 GPM	YES	SAE 12	SAE 08
RD-405-R6	6 GPM			
RD-412-1,5	1,5 GPM	YES	SAE 12	SAE 08



RD-400



RD-400



RD-400R



RD-400R

PRESSURE COMPENSATED FLOW DIVIDERS

- DIVIDER / COMBINER
- 3000 PSI MAXIMUM PRESSURE
- PRECISE AT +/- 10% ACCURACY
- COMMON CAVITIES

PART NUMBER	INLET FLOW	PORT SIZE
DG-FDA-00-50-03	2-3 GPM	SAE 08 (USE BODY 30102362)
DG-FDA-00-50-06	3-6 GPM	
DG-FDA-00-50-09	6-9 GPM	
DG-FDA-00-50-12	9-12 GPM	SAE 12 (USE BODY 30102577)
SN-FDA-00-50-15	8-15 GPM	
SN-FDA-00-50-25	15-25 GPM	
SN-FDA-00-50-40	20-40 GPM	

