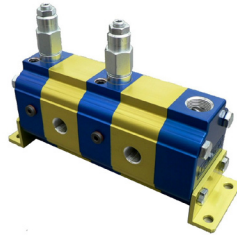


GEAR DIVIDERS, VIVOIL RV, RV2, MIA-FD

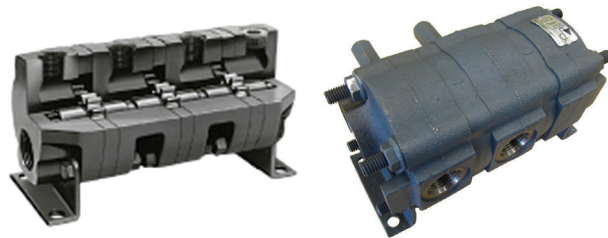
- SPLIT FLOW EQUALLY WITH +/- 1.5% ACCURACY
- INTEGRATED RELIEFS TO REALIGN CYLINDERS WHEN THEY REACH END OF CYCLE
- FOR A QUIET OPERATION, SELECT SPEED AT REC FLOW



PART NUMBER	NUMBER OF SECTIONS	DISPLACEMENT IN <sup>3</sup> / REV.	RPM		GPM		MAX PSI	PORT SIZE	
			MIN	MAX	MIN	MAX		IN	OUT
ARV02B01	2	0.01	1155	7392	0.10	0.64	3045	SAE-4	SAE-4
ARV02B06	2	0.05	1200	5867	0.53	1.27	3045		
ARV02B20	2	0.13	1175	6095	1.3	6.9	3190	SAE-8	SAE-6
ARV02B27	2	0.26	1060	5400	2.4	12.2	3190		
ARV02B34	2	0.48	1082	4520	4.5	18.0	3045		
ARV02B49	2	0.85	1200	2500	8.9	18.4	3000	SAE-12	SAE-10
ARV02B49	2	1.34	1200	2500	13.9	29.0	2600		
ARV04B20	4	0.13	1175	6095	2.6	13.7	3190	SAE-8	SAE-6
ARV04B27	4	0.26	1060	5400	4.7	24.3	3190		

GEAR DIVIDERS

- SPLIT FLOW EQUALLY WITH +/- 2% ACCURACY
- INTEGRATED RELIEFS TO REALIGN CYLINDERS WHEN THEY REACH END OF CYCLE
- FOR A QUIET OPERATION, SELECT SPEED AT RECOMMENDED FLOW
- CAN BE USE INTERNAL OR EXTERNAL DRAIN
- AVAILABLE FROM 2 TO 16 SECTIONS



PART NUMBER	NUMBER OF SECTIONS	DISPLACEMENT IN <sup>3</sup> / REV.	RPM		GPM		MAX PSI	PORT SIZE	
			MIN	MAX	MIN	MAX		IN	OUT
PM2-RV **	2	0.11	500	3500	0.5	3.5	2000	1/2 NPT	3/8 NPT
PM6-RV **	2	0.32			1.35	9.5	1500		
HPR23	2	0.70			3.0	21	3000	SAE 16	SAE 12
HPR27	2	1.46			6.3	44	3000		
PPM2-RV **	4	0.11			1.0	7.0	1500	1/2 NPT	3/8 NPT
HPR21-59	4	0.41			3.57	25	3000	SAE 16	SAE 12
HPR23-59	4	0.70	6	42	3000				

\*\* Model available without reliefs