

HIGH SPEED MOTORS BMM SERIE

**BMM SERIES** MOTOR IS A MINI-MOTOR WITH HIGH SPEED, VERY COMPACT DESIGN, SPOOL VALVE, ECONOMICAL TYPE MOTOR.

**CHARACTERISTIC FEATURES**

- \* COMPACT DESIGN OF SPOOL AND GEAR SET, WHICH PROVIDE MINI VOLUME, HIGH POWER DENSITY AND LOW WEIGHT
- \* CREDIBLE DESIGN FOR SHAFT SEAL, WHICH CAN BEAR HIGH PRESSURE AND BE USED IN PARALLEL OR IN SERIES
- \* DIRECTION OF SHAFT ROTATION AND SPEED CAN BE CONTROLLED EASILY AND SMOOTHLY



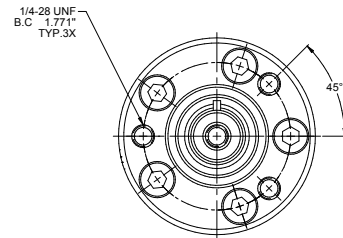
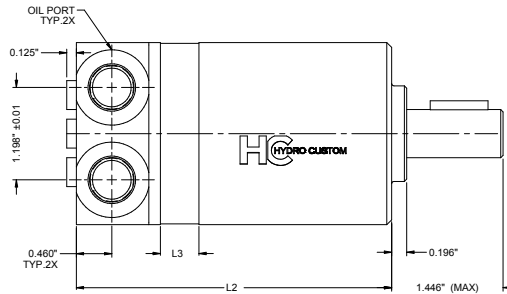
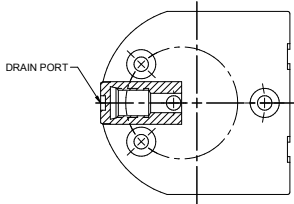
BMM



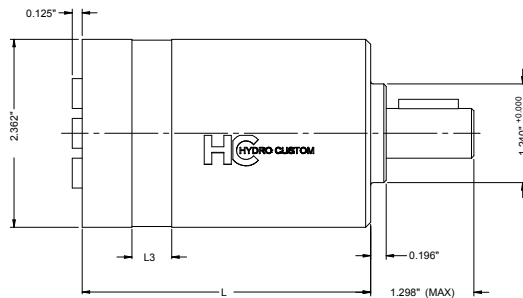
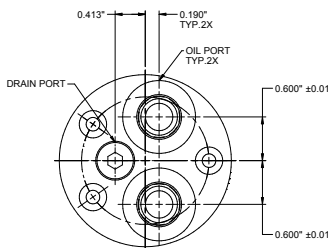
DISPLACEMENT IN <sup>3</sup> (CM <sup>3</sup> ) / REV.		0.5 (8.2)	0.79 (12.9)	1.21 (19.9)	1.93 (31.6)	3.0 (50.3)
FLOW (GPM)	CONT.	4.2	5.2	5.2	5.2	5.2
	INT.	5.2	6.6	6.6	6.6	6.6
SPEED (RPM)	CONT.	1950	1550	1000	630	400
	INT.	2450	1940	1250	800	500
PRESSURE (PSI)	CONT.	1450	1450	1450	1450	1015
	INT.	2030	2030	2030	2030	2030
TORQUE (LB-IN)	CONT.	97	141	221	354	407
	INT.	132	203	309	504	778
POWER (HP)	CONT.	3.38	4.22	4.22	2.96	2.96
	INT.	5.92	8.29	8.29	7.1	5.92
LENGTH (IN)	L	4.09	4.17	4.29	4.45	4.80
	L2	4.13	4.21	4.33	4.53	4.84
	L3	0.14	0.22	0.34	0.53	0.85

OTHER SHAFTS & MOUNTINGS AVAILABLE UPON REQUEST

SIDE PORT



REAR PORT



PART NUMBERS

PORT CONFIGURATION	8.2	12.9	19.9	31.6	50
	0.5	0.79	1.21	1.93	3.0
SIDE PORT	301-0050	301-0051	301-0052	301-0053	301-0055
REAR PORT	301-0060	301-0061	301-0062	301-0063	301-0065