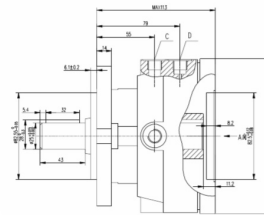
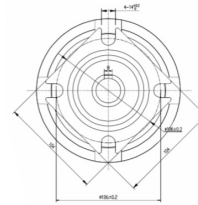


ZD80 HYDRAULIC BRAKES TO INSTALL ON MOTORS

ZD 80 AND ZD 100 SERIES HYDRAULIC BRAKES ARE MULTI-DISC BRAKE DESIGN. THEY ARE WIDELY APPLIED IN HEAVY LOAD MACHINES SUCH AS; CRANES, AGRICULTURAL MACHINES, ENVIRONMENTAL SANITATION MACHINES, ETC.

CHARACTERS:

1. MULTI-DISC BRAKE TYPE
2. COMPACT DESIGN
3. EXCELLENT PERFORMANCE
4. ZD HYDRAULIC BRAKES CAN BE INDEPENDENTLY USED WITHOUT MOTORS
5. LOW NOISE
6. EASY TO INSTALL



MAIN SPECIFICATION

ITEM	ZD80	ZD100
MIN STATIC TORQUE (LB-IN)	3982	4865
MIN OPENING PRESSURE (PSI)	362	
MAX OPENING PRESSURE (PSI)	4350	
MIN OIL QUANTITY FOR BRAKE RELEASING (CC)	7-8	
OIL VOLUME (CC)	50-120	
MAX PRESSURE IN DRAIN SPACE (PSI)	7	

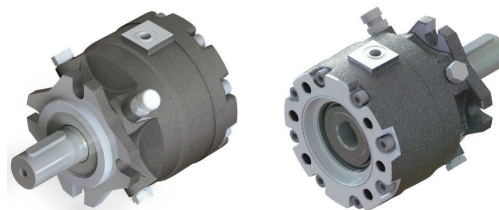
PART NUMBER	FEMALE	MALE	MOUNTING FLANGE
ZD80-A014	1"-6T SPLINE	1"-6T SPLINE	SAE-A 2/4 BOLTS
ZD80-A024		1" KEY	

BTM

SPRING LOADED DISC BRAKES

FEATURES:

- BRAKING TORQUE UP TO 520 NM (383,2 LB-FT)
- SUITABLE FOR DIFFERENT INPUT / OUTPUT SHAFTS AND FLANGES



BRAKE MODEL	STATIC TORQUE N-M (LB-FT)	MAXIMUM PILOT PRESSURE PSI	MINIMUM COMPLETE OPENING PRESSURE PSI	WEIGHT KG (LB)
BTM 03	30 (22.1) - 40 (29.5)	5075	44 - 73	9,5 (21)
BTM 07	60 (44.2) - 80 (59.0)		58 - 87	
BTM 11	100 (73.7) - 120 (88.4)		102 - 131	
BTM 18	170 (125.3) - 190 (140.0)		160 - 189	
BTM 24	230 (169.5) - 250 (184.3)		218 - 247	
BTM 32	320 (235.8) - 330 (243.2)			
BTM 42	400 (294.8) - 440 (324.3)		247 - 276	
BTM 50	480 (353.8) - 520 (383.2)			