

CROSSOVER RELIEF VALVES

- MADE TO ABSORB PEAK OF PRESSURE
- COMPACT DESIGN
- FITS MANY MANUFACTURERS

PART NUMBER	FITS ON MOTORS	PSI RANGE	PORT
469-8210	BMM	500-2000	SAE 6
460-2100	BM1/BM2	725-1450	SAE 10
460-2210	BM1/BM2	1000-3000	
465-1210	BM5	1000-3000	



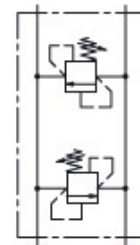
FOR HMM



FOR BM1 & BM2

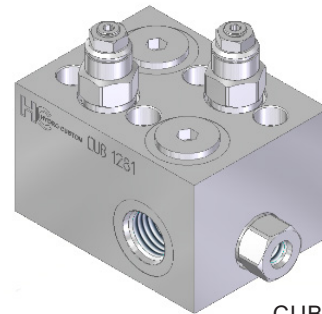


FOR BM5

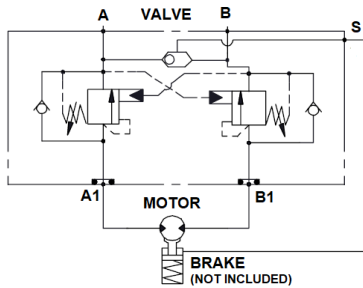


INTEGRATED COUNTERBALANCE VALVES

- MADE TO SMOOTHLY BRAKE ROTATION
- FITS ON BM1 & BM2 MOTORS- INTEGRATE A
- SHUTTLE TO SEND A SIGNAL/OIL



CUB 1281



STEERING COLUMNS

- FITS ALSO ON MOST COMMON DANFOSS & CHARLYNN UNITS

PART NUMBER	LENGTH (IN)
651-1579-S	6
650-1500-S	8
651-1504-S	16

