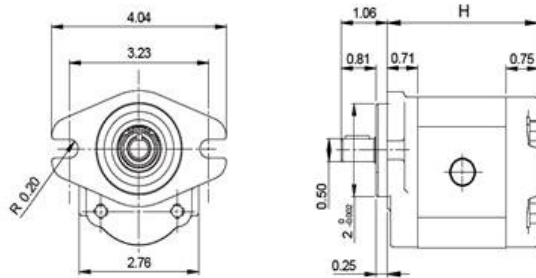


1.5ME SERIE

- BI-DIRECTIONAL
- SAE-AA 2 BOLT MOUNTING FLANGE
- 1/2 PARALLEL SHAFT
- SAE 04 DRAIN PORT
- * **NEW HIGH PRESSURE SHAFT SEAL AVAILABLE CAN GO UP TO 450 PSI COMPARE TO 43 PSI WITHOUT**



PART NUMBER	DISPLACEMENT IN ³ (CM ³) / REV.	DIMENSION H (IN)	RPM MIN	RPM MAX	MAX PSI	PORT SIZE IN & OUT
610910328	0.17 (2.8)	3.35	700	4500	3625	SAE 8
610911088	0.21 (3.5)	3.42		4500	3625	
610910348	0.25 (4.1)	3.49		4000	3625	
610911098	0.32 (5.2)	3.61		4000	3335	
610910368	0.38 (6.2)	3.72	600	3600	3335	SAE 10
610911108	0.46 (7.6)	3.88		3300	2900	
610910388	0.57 (9.3)	4.07		3000	2610	
610910398	0.67 (11)	4.26		3000	2465	



2ME SERIE

- BI-DIRECTIONAL
- SAE-A 2 BOLT MOUNTING FLANGE
- 5/8" PARALLEL SHAFT
- SAE 04 DRAIN PORT
- * **NEW HIGH PRESSURE SHAFT SEAL AVAILABLE CAN GO UP TO 450 PSI COMPARE TO 43 PSI WITHOUT**

ALSO AVAILABLE

- OTHER SHAFT DIMENSIONS
- OUTRIGGER BEARING TO ACCEPT SIDE LOAD
- REAR PORT COVER
- INTERNAL DRAIN

PART NUMBER	DISPLACEMENT IN ³ (CM ³) / REV.	DIMENSION H (IN)	RPM MIN	RPM MAX	MAX PSI	PORT SIZE IN & OUT
612095948	0.40 (6.5)	3.64	600	4000	3600	SAE 10
612081668	0.50 (8.3)	3.74	500	3600		
612083618	0.68 (11.3)	4.02		3500		
612084388	0.84 (13.8)	4.17	3400			
612084398	1.01 (16)	4.32	450	3200	3140	SAE 12
612084408	1.15 (19)	4.64		3000	2900	
612084418	1.37 (22.5)	4.86				
612084428	1.58 (26)	5.09				

