

TMF 900

FIXED DISPLACEMENT AXIAL PISTON MOTORS



FEATURES:

- HIGH PRESSURE
- HIGH ROTATION SPEED
- EXCELLENT VOLUMETRIC AND MECHANICAL EFFICIENCY
- COMPACT DESIGN

DISPLACEMENT IN ³ (CM ³) / REV.	MAX			WEIGHT KG (LB)
	PSI (RATED)	PSI PEAK	RPM	
4.4 (72)	5800	6525	4100	28 (62)
5.5 (90)			4000	
6.7 (110)			3800	

TMV 550

TWO SPEED AXIAL PISTON MOTORS



FEATURES:

- EXCELLENT WEIGHT/POWER RATIO
- HIGH ROTATION SPEED
- EXCELLENT VOLUMETRIC AND MECHANICAL EFFICIENCY
- COMPACT DESIGN

DISPLACEMENT IN ³ (CM ³) / REV.	MAX			WEIGHT KG (LB)
	PSI (RATED)	PSI PEAK	RPM	
2.7 (46)	4350	5800	4000	20 (44)
3.1 (50)				
3.9 (64)				

TMV 650

TWO SPEED AXIAL PISTON PLUG-IN MOTORS



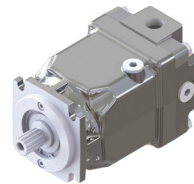
FEATURES:

- SWASHPLATE DESIGN FOR HYDROSTATIC TRANSMISSIONS
- PLUG-IN MOUNTING
- HEAVY DUTY BEARINGS FOR LONG SERVICE LIFE
- HIGH PERMISSIBLE OUTPUT SPEED

DISPLACEMENT IN ³ (CM ³) / REV.	MAX			WEIGHT KG (LB)
	PSI (RATED)	PSI PEAK	RPM	
1.5 (25)	4350	5075	3500	15,6 (34)
1.8 (30)				
2.1 (35)				
2.3 (38)				
2.7 (45)				

TMF 600

FIXED DISPLACEMENT AXIAL PISTON MOTORS



FEATURES:

- HIGH STARTING TORQUE
- SMOOTH OPERATION
- LONG SERVICE LIFE
- HIGH POWER DENSITY
- BUILT-IN VALVES AVAILABLE
- SPEED SENSOR AVAILABLE

DISPLACEMENT IN ³ (CM ³) / REV.	MAX			WEIGHT KG (LB)		
	PSI (RATED)	PSI PEAK	RPM			
1.3 (22)	5075	6090	4200	11,3 (25)		
1.7 (28)			5945		4000	
2.1 (35)				6090	3600	17,8 (39)
2.4 (40)						
2.8 (46)						
3.1 (50)						
3.8 (63)		5945		3240	32,5 (72)	
4.3 (71)						
4.6 (75)						
5.6 (92)		5945	3240	32,5 (72)		
100 (6.1)						