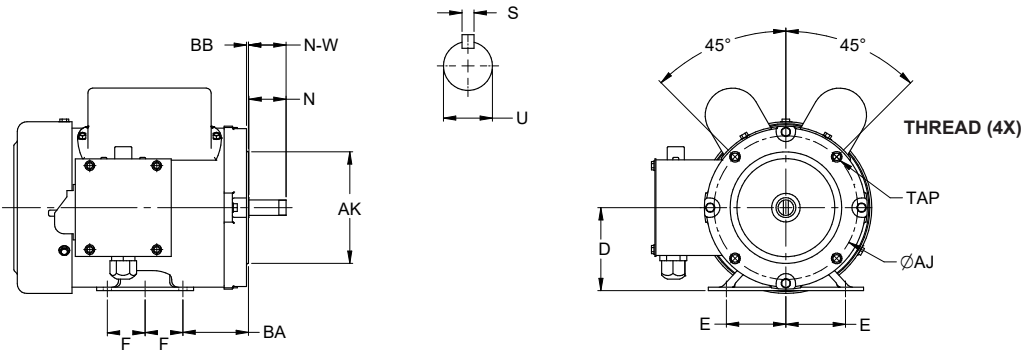


TEFC MOTORS

- CHOICE OF 1/3 TO 20HP
- 1800 RPM (3600 RPM AVAILABLE)
- SINGLE AND THREE PHASE
- NEMA FRAME FROM 56 TO 215 TC
- IP44 CLASS, 1.15 FS
- VOLTAGE AVAILABLE:
 - 115/230V
 - 575V
 - 208-230/460V



HP	PART NUMBERS			FRAME
	115/230V SINGLE PHASE	575V THREE PHASES	208-230/460V THREE PHASES	
1/3	F56C1/3S4C	F56C1/3M4D	F56C1/3M4A	56C
1/2	F56C1/2S4C	F56C1/2M4D	F56C1/2M4A	
3/4	F56C3/42S4C	F56C3/4M4D	F56C3/4M4A	
1	F56C1S4	F56C1M4D	F56C1M4A	
1.5	F56C1.5S4C	F56C1.5M4D	F56C1.5M4A	
2	F56C2S4C	F56C2M4D	F56C2M4A	
3	-	F182TC3M4D	F182TC3M4A	182TC
5	-	F184TC5M4D	F184TC5M4A	184TC
7.5	-	F215TC7.5M4D	F215TC7.5M4A	213TC
10	-	F215TC10M4D	F215TC10M4A	215TC
15	-	F215TC15M4D	F215TC15M4A	254TC
20	-	F215TC20M4D	F215TC20M4A	256TC

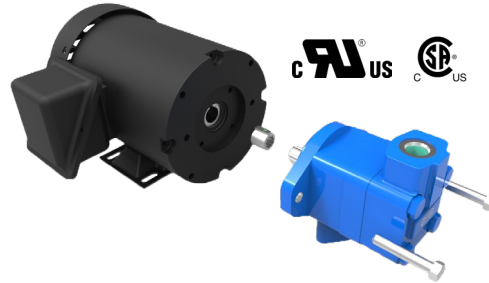


DIMENSIONS

FRAME SIZE	D	E	F	N	U	S	N-W	AJ	AK	BA	BB	THREAD
56C	3.500	2.438	1.5	1.937	0.625	0.188	1.880	5.875	4.500	2.750	0.160	3/8-16 UNC
143T 145T	3.5	2.75	2 2.5	2.31	0.875	0.188	2.25	5.875	4.5	2.25	0.16	3/8-16 UNC
182T 184T	4.500	3.750	2.250 2.750	2.875	1.125	0.250	2.750	7.250	8.500	2.750	0.250	1/2-12 UNC
213T	5.25	4.25	2.75	3.375	1.375	0.312	3.125	7.25	8.5	3.5	0.25	1/2-13 UNC
215T	5.250	4.250	3.500	3.375	1.375	0.312	3.125	7.250	8.500	3.500	0.250	1/2-13 UNC
254T 256T	6.25	5	4.125 5	4.32	1.625	0.375	4	7.25	8.5	4.75	0.25	1/2-13 UNC

FEATURES AND BENEFITS

- VERY ECONOMICAL & COMPACT DESIGN
- DIRECT MOUNT MOTOR CAN BE ORDERED SEPARATELY

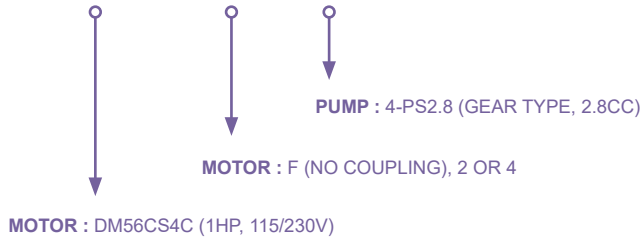


MODEL CODE

EXAMPLE

DM56CS4C

4- PS2.8



MOTORS - TEFC - 1800 RPM

HP	PART NUMBERS			FRAME	PUMP SIDE FLANGE & SHAFT
	115/230V SINGLE PHASE	575V THREE PHASES	208-230/460V THREE PHASES		
0,50	DM56C1/2S4CF	-	-	56C	SAE A-2B FLANGE AND SAE AA-4B FLANGE
0,75	DM56C3/4S4CF	-	-		
1	DM56C1S4CF	-	-		
1,5	DM56C1.5S4CF	-	-		
2	DM56C2S4CF	-	-		
3	DM56C3S4CF	-	-		
5	-	DM215TC3M4DF	DM215TC3P4AF	215TC	SAE A-2B FLANGE
7,5	-	DM215TC5M4DF	DM215TC5P4AF		
10	-	DM215TC7.5M4DF	DM215TC7.5P4AF		
15	-	DM215TC10M4DF	DM215TC10P4AF		
20	-	DM215TC15M4DF	DM215TC15P4AF		
		DM215TC20M4DF	DM215TC20P4AF		

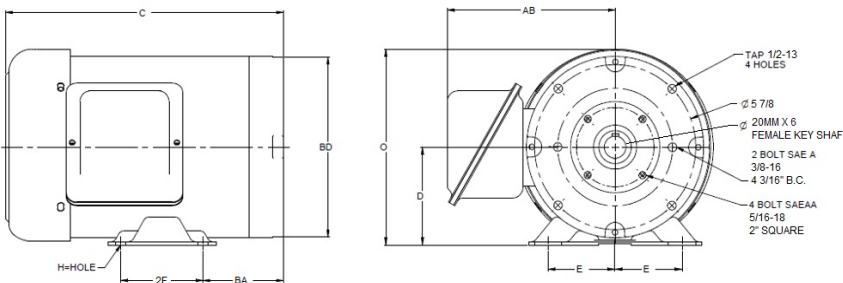
PUMPS

GEAR TYPE

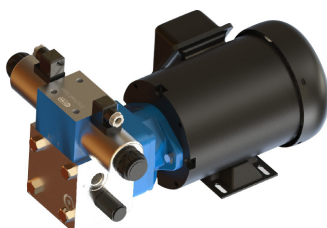
CODE	GPM	MODEL
4-PS1.4	0,71	1.5 PE PAGE 62
4-PS2.1	1,00	
4PE2.8	1,23	
4PE3.5	1,71	2 PE PAGE 63
2-PS4.5	2,1	
2PE6.5	3,12	
2PE8.3	3,9	
2PE11.3	5,3	
2PE13.8	6,55	
2PE16	7,87	

VANE TYPE

CODE	GPM	MODEL
2-2S1	1,5	V10 PAGE 69
22S2	3,0	
22S3	4,5	
22S4	6,0	
22S5	7,5	
22S6	9,0	
22S7	10,5	V20 PAGE 69
22S8	12,0	
22S9	13,5	
22S10	15,0	
22S11	16,5	
22S12	18,0	
22S13	19,5	



FRAME	C	D	E	2F	H	O	BD	AB	BA
56C	10 1/8	3 1/2	2 7/16	3	11/32 SLOTS	7	6 1/2 DIA	6 1/8	2 15/16
215TC	15 5/8	5 1/4	4 1/4	7	13/32 DIA	11	8 1/2 DIA	8 3/8	3 1/2



ALSO AVAILABLE

- HYDRAULIC CIRCUIT DIRECTLY MOUNTED ON THE PUMP
- VERY COMPACT DESIGN. LESS PIPING
- MANY OPTIONS
- OTHER OPTIONS AVAILABLE