

3PE SERIE

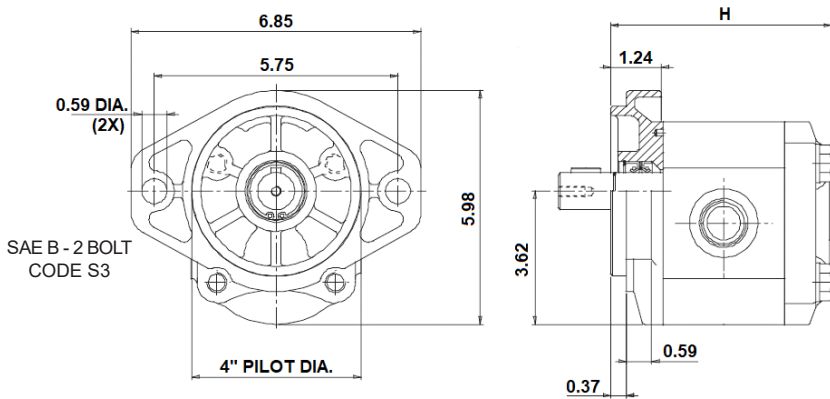
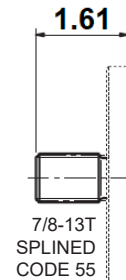
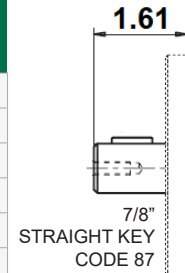
- CLOCKWISE ROTATION
- SAE B -2 BOLT MOUNTING



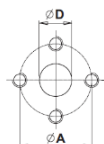
ALSO AVAILABLE

- COUNTERCLOCKWISE ROTATION
- OTHER SHAFTS & FLANGES
- TANDEM PUMPS & MULTIPLE PUMPS
- REAR COVERS WITH INTEGRATED VALVES

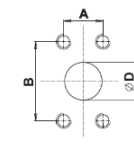
DISPLACEMENT IN ³ (CM ³) / REV.	DIMENSION H (IN)	GPM @ 1800 RPM	MAX RPM	MAX PSI	PORTS		SHAFT	PART NUMBER		
					INLET	OUTLET				
1.25 (21)	5.06	9.7	3000	3600	SAE 16	SAE 12	7/8" KEY	6130 1261 2		
							7/8-13T SPLINE	6130 1111 2		
1.65 (27)	5.26	12.8	3000	3600			7/8" KEY	6130 1262 2		
							7/8-13T SPLINE	6130 1112 2		
2.04 (33)	5.46	15.9	3000	3600			7/8" KEY	6130 1263 2		
							7/8-13T SPLINE	6130 1103 2		
2.36 (38)	5.61	18.4	3000	3600			7/8" KEY	6130 1264 2		
							7/8-13T SPLINE	6130 1113 2		
2.86 (46)	6.24	22.3	2750	3500			SAE 20	SAE 16	7/8" KEY	6130 1265 2
									7/8-13T SPLINE	6130 7967 2
3.30 (55)	6.48	25.7	2500	3190	7/8" KEY	6130 1266 2				
					7/8-13T SPLINE	6130 1104 2				
3.85 (65)	6.76	30	2500	2900	7/8" KEY	6130 1267 2				
					7/8-13T SPLINE	6130 1114 2				
4.48 (73.4)	7.03	34.9	2500	2610	7/8" KEY	6130 1268 2				
					7/8-13T SPLINE	6130 1115 2				



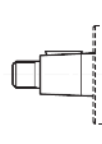
OTHER PORT CONNECTIONS



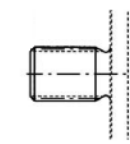
EUROPEAN FLANGE CODE P



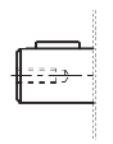
CODE FLANGE 61 SALAMI CODE S



1:8 TAPERED CODE 38



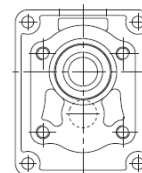
1-15T SPLINED CODE 56



1" STRAIGHT KEY CODE 88

OTHER SHAFTS

OTHER MOUNTING FLANGES



50.8mm PILOT CODE P2