

PG330 SERIE

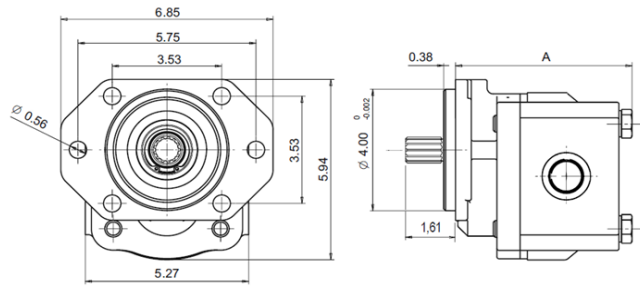
- CLOCKWISE ROTATION
- SAE B -2/4 BOLT MOUNTING
- 7/8-13T SPLINED SHAFT

ALSO AVAILABLE

- COUNTERCLOCKWISE ROTATION
- OTHER SHAFTS & FLANGES
- TANDEM PUMPS & MULTIPLE PUMPS
- OUTBOARD BEARING



PART NUMBER	DISPLACEMENT IN ³ (CM ³) / REV.	DIMENSION A (IN)	GPM @ 1800 RPM	MAX RPM	MAX PSI	PORTS	
						INLET	OUTLET
6151 0000 2	1.43 (23)	5.54	11.14	3000	3800	SAE 16	SAE 12
6151 0000 2	1.74 (29)	5.70	13.56				
6151 0003 2	2.1 (34)	5.88	16.36				
6151 0001 2	2.46 (40)	6	19.17	2700	3800	SAE 20	SAE 16
6151 0004 2	2.89 (47)	6.94	22.52				
6151 0005 2	3.37 (55)	7.18	26.26				
6151 0006 2	3.92 (64)	7.45	30.55	2500	3500	SAE 20	SAE 16
6151 0007 2	4.48 (73)	7.73	34.91				
6151 0008 2	4.91 (80)	7.96	38.26				

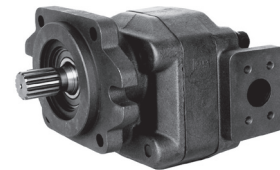


PNC SERIE

- CLOCKWISE ROTATION
- SAE B -2/4 BOLT MOUNTING
- 1 1/4-14T SPLINED SHAFT

ALSO AVAILABLE

- SMALLER DISPLACEMENTS
- COUNTERCLOCKWISE ROTATION
- OTHER SHAFTS & FLANGES
- OUTBOARD BEARING
- TANDEM PUMPS & MULTIPLE PUMPS



PART NUMBER	DISPLACEMENT IN ³ (CM ³) / REV.	DIMENSION A (IN)	GPM @ 1800 RPM	MAX RPM	MAX PSI	PORTS	
						INLET	OUTLET
1PNC 125 DG09M	5.08 (83)	8.83	39.58	3000	3500	1 1/2" CODE FLANGE 61 (M12 THREAD)	1 1/4" CODE FLANGE 61 (M10 THREAD)
1PNC 150 DG09M	6.1 (100)	9.17	47.53				
1PNC 175 DG09M	7.11 (116)	9.48	55.48	2500	3200	2" CODE FLANGE 61 (M12 THREAD)	1 1/2" CODE FLANGE 61 (M12 THREAD)
1PNC 200 DG09M	8.13 (133)	9.82	63.35	2000	2850		
1PNC 225 DG09M	9.15 (150)	10.13	71.3	1750	2500		

