

**BM20 MANUAL VALVES**

- OUR SMALLEST MANUAL VALVE
- ZINC COATED
- DOUBLE ACTING SPOOL, SPRING RETURN WITH LEVERS
- RELIEF SET TO 2550 PSI
- HANDLES INCLUDED
- POWER BEYOND OPTION
- OPEN/CLOSED CENTER

PART NUMBER	NB OF SPOOL	GPM MAX	PSI MAX	PORTS
902457	1	5.2	4700	P, T, A, B: SAE-06  P2 & T2: SAE-08
902458	2			
902459	3			
90211008	4			
90211009	5			
902110010	6			
902110011	7			



**MB2 MANUAL VALVES**

- BLACK PAINTED
- DOUBLE ACTING SPOOL, SPRING RETURN WITH LEVERS
- OPEN/CLOSED CENTER. POWER BEYOND OPTION
- HANDLES INCLUDED
- RELIEF SET TO 2550 PSI
- OPEN CENTER ONLY, NO POWER BEYOND

PART NUMBER	NB OF SPOOL	GPM MAX	PSI MAX	PORTS
MB2/1S-3/18L/E8-M1	1	12	3600	SAE-08

**FITS "SD4"  
WALVOIL FOOTPRINT**  
LOTS OF OPTIONS AVAILABLE

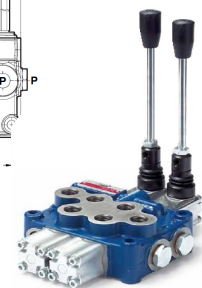
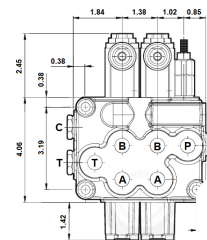


**MB3 MANUAL VALVES**

- BLACK PAINTED
- DOUBLE ACTING SPOOL, SPRING RETURN WITH LEVERS
- OPEN/CLOSED CENTER
- POWER BEYOND OPTION
- HANDLES INCLUDED
- RELIEF SET TO 2550 PSI

PART NUMBER	NB OF SPOOL	GPM MAX	PSI MAX	PORTS
MB3/1S-3/18L/E8-M1	1	12	4600	SAE-08
MB3/2S-3/18L/E8-M2	2			
MB3/3S-3/18L/E8-M3	3			
MB3/4S-3/18L/E8-M4	4			
MB3/5S-3/18L/E8-M5	5			
MB3/6S-3/18L/E8-M6	6			
MB3/7S-3/18L/E8-M7	7			

**FITS "SD5"  
WALVOIL FOOTPRINT**  
LOTS OF OPTIONS AVAILABLE



**ALSO AVAILABLE**

- MOTOR AND SINGLE ACTING SPOOL
- ELECTRIC, AIR AND CABLE CONTROLS
- LIMIT SWITCH
- DETENT, FLOAT CONTROL
- 2 AXIS JOYSTICK

**BM50 8 SPOOL MANUAL VALVES**

- DOUBLE ACTING SPOOL, SPRING RETURN WITH LEVERS
- HANDLES INCLUDED
- OPEN/CLOSED CENTER
- RELIEF SET TO 2550 PSI

PART NUMBER	NB OF SPOOL	GPM MAX	PSI MAX	PORTS
BM50/8	8	13	4700	SAE-08
BM50/8+2 JOYSTICK				

