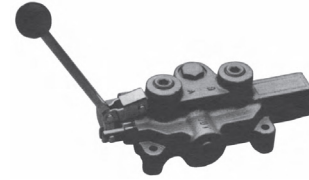


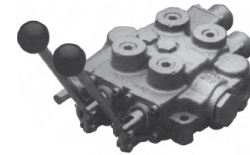
RD500 & RD2500 MANUAL VALVES

- 3000 PSI MAXIMUM PRESSURE
- DOUBLE ACTING SPOOLS

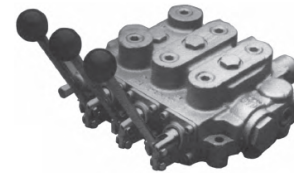
PART NUMBER	NB. OF SPOOL	GPM MAX	PORTS	DESCRIPTION	GRESEN/PARKER EQUIVALENT
RD2575-T4-ESA1	1	20	P&T: 3/4 NPT A&B: 1/2 NPT	SPRING RETURN	400
RD2575-T4-EDA1				3 POSITION DETENT	410
RD512-CA-5A4B1				SPRING RETURN	SP-4-HP
RD512-GC-5A4B1	2	30	P&T: SAE-12 A&B: SAE-10	FLOAT DETENT	SPK-4-HP
RD516-CA-5A4B1				SPRING RETURN	SP-4-4-HP
RD526-CCAA-5A4B1					
RD522-CCAA-5A4B1	3	25	P&T: 3/4 NPT A&B: 1/2 NPT	SPRING RETURN	SP-4-4-4-HP
RD532-CCCAA-5A4B1					
RD536-CCCAA-5A4B1					



RD25



RD52



RD53

LOG SPLITTER MANUAL VALVES

PART NUMBER	NB. OF SPOOL	GPM MAX	PSI MAX	PORTS	DESCRIPTION
LS-3000-1	1	25	2750	P&T: 3/4 NPT A&B: 1/2 NPT	PRESSURE RELEASE DETENT, SPOOL OUT POSITION
LS-3000-2				3/4 NPT	
LSV-3000-1				P&T: 3/4 NPT A&B: 1/2 NPT	
RD512-CF-5A4B1	2	30	3000	P&T: 3/4 NPT A&B: 1/2 NPT	PRESSURE RELEASE DETENT, BOTH POSITION
RD512-CF-5A4B1					PRESSURE RELEASE DETENT, SPOOL OUT POSITION, C/W POWER BEYOND
RD522-CCEA-5A4B1					1ST SPOOL: PRESSURE RELEASE DETENT, BOTH POSITION ON 2ND SPOOL: D.A., SPRING RETURN
RD522-CCEE-5A4B1	2	30	3000	P&T: SAE-12 A&B: SAE-10	1ST & 2ND SPOOL: PRESSURE RELEASE DETENT, SPOOL OUT POSITION
RD525-MMEE-5A4B1					AUTO-CYCLE C/W POWER BEYOND



LS-3000



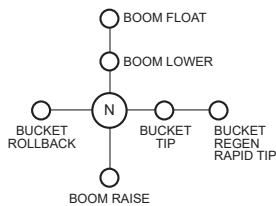
LSV-3000-1

LOADER APPLICATION VALVES

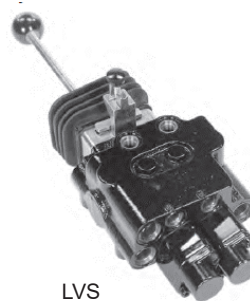
- 2 SPOOLS MOUNTED ON A JOYSTICK
- LOAD CHECK ON EACH SECTION
- 1ST SPOOL IS DOUBLE ACTING WITH FLOAT
- 2ND SPOOL IS DOUBLE ACTING WITH REGEN

JOYSTICK HANDLE

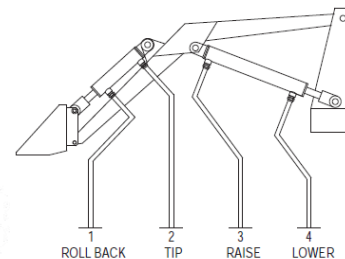
THE JOYSTICK HANDLE WILL OPERATE BOTH SPOOLS USING ONE LEVER HANDLE. THE TWO SPOOLS CAN BE OPERATED INDEPENDENTLY OR AT THE SAME TIME DEPENDING UPON HANDLE MOVEMENT. BECAUSE WE ALLOW FOR MAXIMUM MOUNTING FLEXIBILITY, WE HAVE 4 OPTIONS FOR THE LVS AND 4 OPTIONS FOR THE LVR. THE HANDLE SHIFT PATTERN FOR ALL IS SHOWN AT RIGHT.



JOYSTICK HANDLE OPERATION
LOOKING AT HANDLE KNOB



LVS



PART NUMBER	NB. OF SPOOL	GPM MAX	PSI MAX	PORTS
LVS-1-A-GR-5-A-1	2	11	3000	P&T: SAE-08 A&B: SAE-06