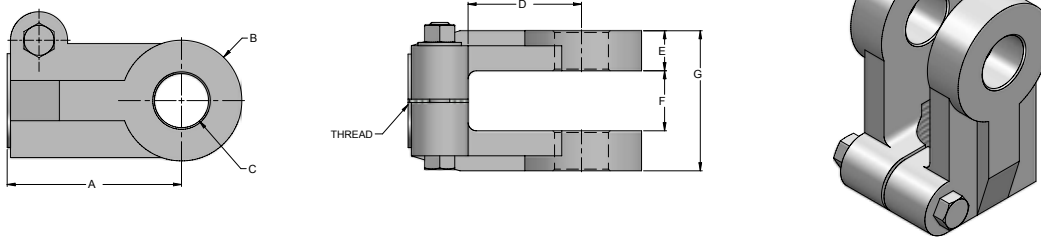


FEMALE CLEVIS

PART NUMBER	A	B	C	D	E	F	G	MAXIMUM LOAD PUSH / PULL (LBS)
CL-100075-CLP	1.50"	0.76"	1.75"	1.37"	0.87"	0.37"	1.62"	5300
CL-125100-CLP	2.00"	1.01"	2.62"	2.12"	1.12"	0.50"	2.12"	22500
CL-175100-CLP	2.00"	1.01"	2.62"	2.12"	1.12"	0.62"	2.37"	28100
CL-200100-CLP	2.00"	1.01"	2.62"	2.00"	1.12"	0.62"	2.37"	28100
CL-250150-CLP	3.00"	1.51"	3.00"	2.25"	1.62"	0.75"	3.12"	50600

MATERIAL : C1045 CAST STEEL

MAXIMUM PUSHING & PULLING FORCE ARE BASED ON A SUGGESTED MINIMUM SAFETY FACTOR OF 2

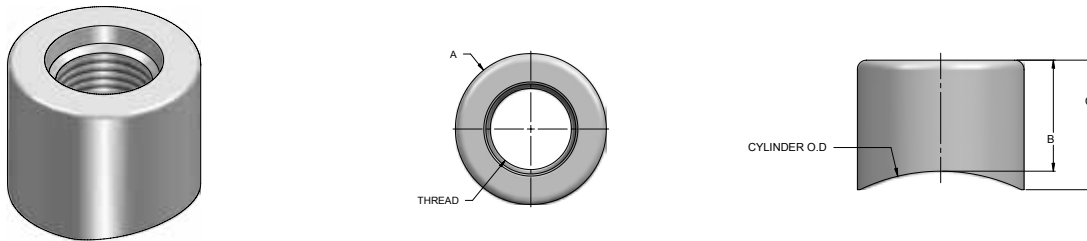


ADJUSTABLE CLEVIS

PART NUMBER	THREAD	A	B	C	D	E	F	G	MAXIMUM LOAD PUSH / PULL (LBS)
ST-0870718-CVP	0.875-14 UNF	2.75"	1.87"	0.76"	1.62"	0.56"	0.87"	2.00"	5300
ST-1121020-CVP	1.125-12 UNF	3.25"	2.00"	1.01"	2.12"	0.75"	1.12"	2.62"	23000
ST-1121022-CVP	1.125-12 UNF	3.25"	2.25"	1.01"	2.12"	0.75"	1.12"	2.62"	23000
ST-1121222-CVP	1.125-12 UNF	3.25"	2.25"	1.26"	2.12"	0.75"	1.12"	2.62"	23000
ST-1251022-CVP	1.250-12 UNF	3.25"	2.25"	1.01"	2.12"	0.75"	1.12"	2.62"	23000
ST-1311025-CVP	1.312-12 UN	3.25"	2.50"	1.01"	2.12"	0.81"	1.12"	2.75"	33700
ST-1311225-CVP	1.312-12 UN	3.25"	2.50"	1.26"	2.12"	0.81"	1.12"	2.75"	33700
ST-1501025-CVP	1.500-12 UNF	3.25"	2.50"	1.01"	2.12"	0.81"	1.12"	2.75"	33700
ST-1501225-CVP	1.500-12 UNF	3.25"	2.50"	1.26"	2.12"	0.81"	1.12"	2.75"	33700
ST-1501226-CVP	1.500-12 UNF	3.62"	2.75"	1.26"	2.12"	1.06"	1.18"	3.31"	58900

MATERIAL : C1045 CAST STEEL / DUCTILE IRON

MAXIMUM PUSHING & PULLING FORCE ARE BASED ON A SUGGESTED MINIMUM SAFETY FACTOR OF 2



PORT NPT

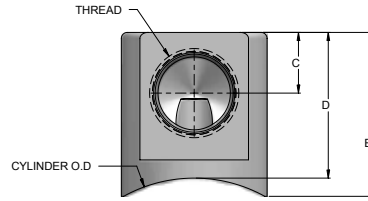
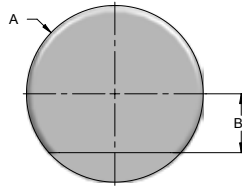
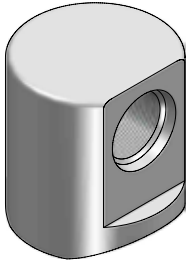
PART NUMBER	CYLINDER O.D.	THREAD	A	B	C
025N-200062-POP	2.00"	1/4 NPT	0.87"	0.62"	0.68"
037N-250075-POP	2.50"	3/8 NPT	1.12"	0.75"	0.87"
050N-300087-POP	3.00"	1/2 NPT	1.25"	0.87"	0.93"
050N-350087-POP	3.50"	1/2 NPT	1.25"	0.87"	0.93"
050N-400087-POP	4.00"	1/2 NPT	1.25"	0.87"	0.93"
050N-450087-POP	4.50"	1/2 NPT	1.25"	0.87"	0.93"
075N-550100-POP	5.50"	3/4 NPT	1.37"	1.00"	1.06"

PORT SAE

PART NUMBER	CYLINDER O.D.	THREAD	A	B	C
04S-200062-POP	2.00"	SAE 4	0.75"	0.62"	0.68"
06S-250075-POP	2.50"	SAE 6	1.00"	0.75"	0.81"
08S-300093-POP	3.00"	SAE 8	1.12"	0.93"	1.00"
08S-350093-POP	3.50"	SAE 8	1.12"	0.93"	1.00"
08S-400093-POP	4.00"	SAE 8	1.12"	0.93"	1.00"
08S-450093-POP	4.50"	SAE 8	1.12"	0.93"	1.00"
12S-550100-POP	5.50"	SAE 12	1.50"	1.00"	1.06"

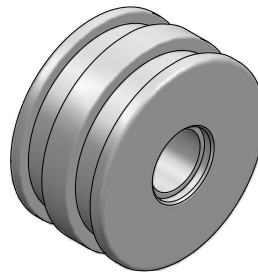
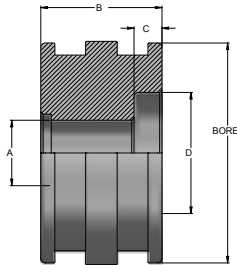
MATERIAL : C1020 STEEL

MAXIMUM OPERATING PRESSURE : 3000 psi (SAFETY FACTOR = 2)



PORT							
PART NUMBER	CYLINDER O.D	THREAD	A	B	C	D	E
025N-200112-90POP	2.00"	1/4 NPT	1.12"	0.37"	0.43"	1.12"	1.25"
037N-250125-90POP	2.50"	3/8 NPT	1.25"	0.43"	0.50"	1.25"	1.37"
050N-300150-90POP	3.00"	1/2 NPT	1.62"	0.50"	0.62"	1.50"	1.68"
050N-350150-90POP	3.50"	1/2 NPT	1.62"	0.50"	0.62"	1.50"	1.62"
050N-400150-90POP	4.00"	1/2 NPT	1.62"	0.50"	0.62"	1.50"	1.62"
050N-450150-90POP	4.50"	1/2 NPT	1.62"	0.50"	0.62"	1.50"	1.62"
075N-550200-90POP	5.50"	3/4 NPT	2.12"	0.62"	0.87"	2.00"	2.18"
04S-200112-90POP	2.00"	SAE 4	1.12"	0.37"	0.43"	1.12"	1.25"
06S-250125-90POP	2.50"	SAE 6	1.25"	0.43"	0.50"	1.25"	1.37"
08S-300150-90POP	3.00"	SAE 8	1.62"	0.50"	0.62"	1.50"	1.68"
08S-350150-90POP	3.50"	SAE 8	1.62"	0.50"	0.62"	1.50"	1.62"
08S-400150-90POP	4.00"	SAE 8	1.62"	0.50"	0.62"	1.50"	1.62"
08S-450150-90POP	4.50"	SAE 8	1.62"	0.50"	0.62"	1.50"	1.62"
12S-550200-90POP	5.50"	SAE 12	2.12"	0.62"	0.81"	2.00"	2.18"

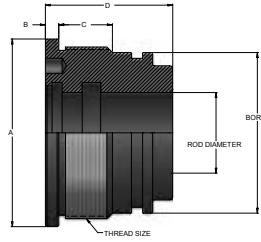
MATERIAL : C1020 STEEL  
 MAXIMUM OPERATING PRESSURE : 3000 psi (SAFETY FACTOR = 2)



PISTON							
PART NUMBER	BORE	ROD DIAMETER	A	B	C	D	
ST-15062-PIP	1.50"	1.00"	0.62"	1.50"	NONE	NONE	
ST-20075-PIP	2.00"	1.25"	0.75"	1.50"	NONE	NONE	
ST-25087-PIP	2.50"	1.50"	0.87"	1.62"	0.37"	1.62"	
ST-30087-PIP	3.00"	1.50"	0.87"	1.62"	0.37"	1.62"	
ST-35100-PIP	3.50"	1.75"	1.00"	1.62"	0.43"	1.87"	
ST-40125-PIP	4.00"	2.00"	1.25"	1.75"	0.68"	2.62"	
ST-50150-PIP	5.00"	2.50"	1.50"	2.50"	0.62"	3.25"	
ST-60200-PIP	6.00"	3.00"	2.00"	2.50"	0.62"	3.62"	

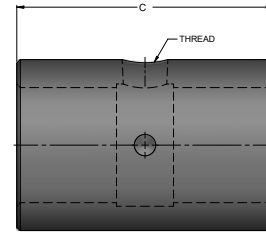
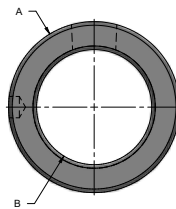
MATERIAL : 65-45-12 DUCTILE CAST IRON  
 PISTON FOR 5" & 6" BORE COME WITH A WEAR RING GROOVE





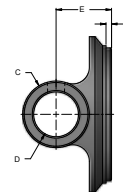
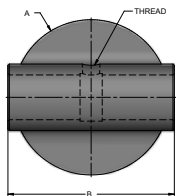
GLAND							
PART NUMBER	BORE	ROD DIAMETER	THREAD SIZE	A	B	C	D
ST-15100-GLP	1.50"	1.00"	1.700-12 UN	2.00"	0.25"	0.75"	2.00"
ST-20125-GLP	2.00"	1.25"	2.200-12 UN	2.50"	0.25"	0.87"	2.25"
ST-25150-GLP	2.50"	1.50"	2.700-12 UN	3.00"	0.25"	1.00"	2.37"
ST-30150-GLP	3.00"	1.50"	3.200-12 UN	3.50"	0.25"	1.00"	2.37"
ST-35175-GLP	3.50"	1.75"	3.700-12 UN	4.00"	0.25"	1.00"	2.37"
ST-40200-GLP	4.00"	2.00"	4.200-12 UN	4.50"	0.25"	1.00"	2.37"
ST-50250-GLP	5.00"	2.50"	5.200-12 UN	5.50"	0.31"	1.37"	3.00"
ST-60300-GLP	6.00"	3.00"	6.250-12 UN	6.75"	0.50"	1.56"	3.50"

MATERIAL : 65-45-12 DUCTILE CAST IRON  
GLAND FOR 5" & 6" BORE COMES WITH A WEAR RING GROOVE



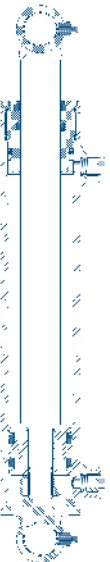
BUSHING						
PART NUMBER	A	B	C	THREAD	MAXIMUM PUSH (LBS)	MAXIMUM PULL (LBS)
BU-075200-BUP	1.25"	0.76"	2.00"	1/8 NPT	5300	5300
BU-100225-BUP	1.50"	1.01"	2.25"	1/8 NPT	21200	21200
BU-125225-BUP	2.00"	1.26"	2.25"	1/8 NPT	29000	29000
BU-150250-BUP	2.25"	1.51"	2.50"	1/8 NPT	37700	37700
BU-200325-BUP*	3.00"	*2.01"	3.25"	1/8 NPT	59000	50000

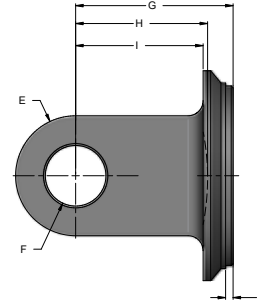
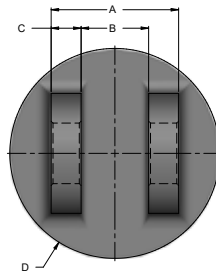
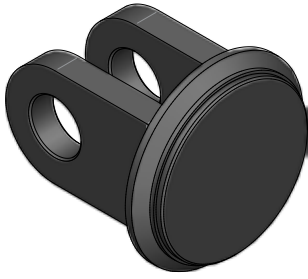
\* COME WITH A SLEEVE TO PASS FROM 2" TO 1 3/4" PIN DIAMETER  
MAXIMUM PUSHING / PULLING FORCE ARE BASED ON A SUGGESTED MINIMUM SAFETY FACTOR OF 2  
MATERIAL : C1020 STEEL



END CAP BUSHING										
PART NUMBER	BORE	THREAD	A	B	C	D	E	F	MAXIMUM PUSH (LBS)	MAXIMUM PULL (LBS)
BU-15075-CAP	1.50"	1/8 NPT	2.00"	2.25"	1.25"	0.76"	1.12"	0.12"	5300	5300
BU-20100-CAP	2.00"	1/8 NPT	2.50"	2.75"	1.50"	1.01"	1.25"	0.12"	9500	9500
BU-25100-CAP	2.50"	1/8 NPT	3.00"	3.25"	1.50"	1.01"	1.25"	0.12"	14700	14700
BU-30100-CAP	3.00"	1/8 NPT	3.50"	3.75"	1.50"	1.01"	1.25"	0.12"	21200	21200
BU-35125-CAP	3.50"	1/8 NPT	4.00"	4.25"	2.00"	1.26"	1.50"	0.12"	29000	29000
BU-40150-CAP	4.00"	1/8 NPT	4.50"	4.75"	2.25"	1.51"	1.62"	0.12"	37700	37700
BU-50200-CAP*	5.00"	1/8 NPT	5.50"	5.75"	3.00"	2.01"	2.25"	0.25"	59000	50000

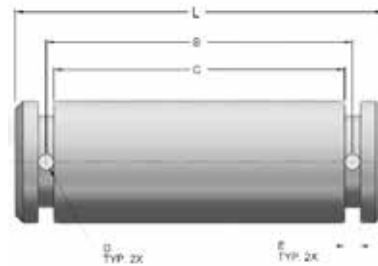
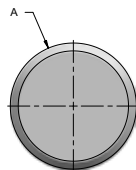
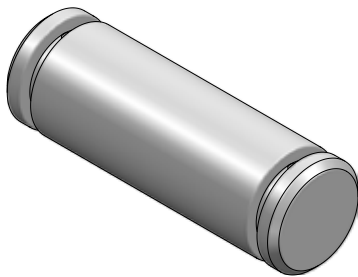
\* COME WITH A SLEEVE TO PASS FROM 2" TO 1 3/4" PIN DIAMETER  
MAXIMUM PUSHING / PULLING FORCE ARE BASED ON A SUGGESTED MINIMUM SAFETY FACTOR OF 2  
MATERIAL : C1045 CAST STEEL





END CAP CLEVIS													
PART NUMBER	BORE	A	B	C	D	E	F	G	H	I	J	MAXIMUM PUSH (LBS)	MAXIMUM PULL (LBS)
CL-15075-CAP	1.50"	1.62"	0.87"	0.37"	2.00"	1.50"	0.76"	1.87"	none	1.37"	0.12"	5300	5300
CL-20100-CAP	2.00"	2.12"	1.12"	0.50"	2.50"	2.00"	1.01"	2.62"	none	2.12"	0.12"	9500	9500
CL-25100-CAP	2.50"	2.12"	1.12"	0.50"	3.00"	2.00"	1.01"	2.62"	none	2.12"	0.12"	14750	14700
CL-30100-CAP	3.00"	2.12"	1.12"	0.50"	3.50"	2.00"	1.01"	2.62"	none	2.12"	0.12"	22500	22500
CL-35100-CAP	3.50"	2.37"	1.12"	0.62"	4.00"	2.00"	1.01"	2.62"	2.12"	2.00"	0.12"	28100	28100
CL-40100-CAP	4.00"	2.37"	1.12"	0.62"	4.50"	2.00"	1.01"	2.50"	2.00"	1.75"	0.12"	28100	28100
CL-50150-CAP	5.00"	3.12"	1.62"	0.75"	5.50"	3.00"	1.51"	3.12"	none	2.25"	0.25"	50600	50600

MATERIAL : C1045 CAST STEEL  
 MAXIMUM PUSHING / PULLING FORCE ARE BASED ON A SUGGESTED MINIMUM SAFETY FACTOR OF 2



PIN							
PART NO	A	B	C	D & E	L	MAXIMUM LOAD (LBS)	FOR MODEL
075175-PNP	0.750"	1.87"	1.75"	0.12"	2.38"	15700	CL15, TCL15 CAP
075212-PNP	0.750"	2.25"	2.12"	0.12"	2.62"	15700	TCL15 FRONT CLEVIS
100237-PNP	1.000"	2.50"	2.37"	0.12"	3.00"	28100	CL20, CL25, CL30
100262-PNP	1.000"	2.75"	2.62"	0.12"	3.25"	28100	CL35, CL40
100275-PNP	1.000"	2.87"	2.75"	0.12"	3.28"	28100	TR2.5, TR3-20/25/30
100287-PNP	1.000"	3.00"	2.87"	0.12"	3.63"	28100	TCL, TR3-35/40
125350-PNP	1.250"	3.62"	3.50"	0.12"	4.12"	50500	TRxx-xx16-ASAE, TR3-50
150337-PNP	1.500"	3.56"	3.37"	0.18"	4.12"	63100	CL50

MATERIAL : C1045 STEEL ZINC PLATED  
 MAXIMUM PUSHING / PULLING FORCE ARE BASED ON A SUGGESTED MINIMUM SAFETY FACTOR OF 2

