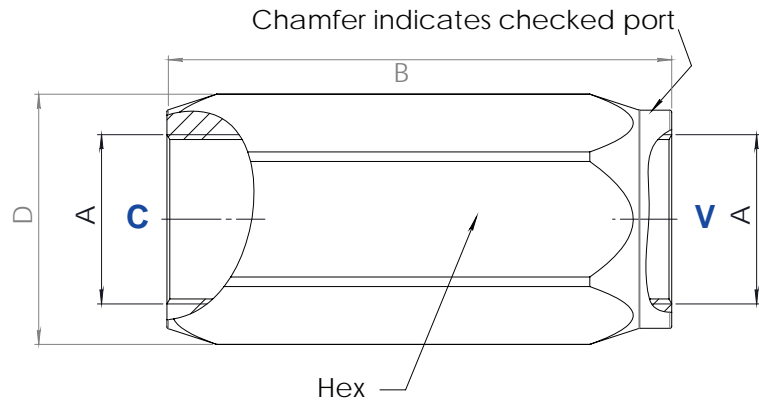


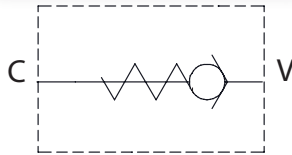
CVL

POPPET CHECK VALVE IN LINE

DIMENSIONS



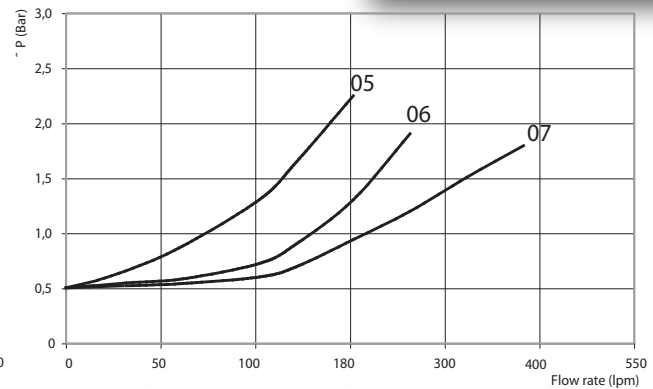
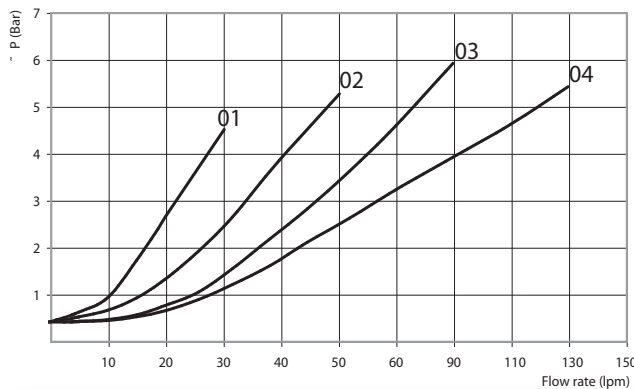
HYDRAULIC SYMBOL



Size	A SAE	B	D	Hex	Weight kg	Max Pressure bar	Max Flow rate lpm
01	6	58	21	19	0,10	400	30
02	8	62	27	24	0,19	400	50
03	10	71	33	30	0,32	350	90
04	12	83	40	36	0,58	300	130
05	16	106	57	50	0,93	280	180
06	20	125	63	55	1,51	260	250
07	24	137	74	65	2,41	220	380

Materials: Zinc plated steel body, hardened steel poppet.

CURVES



CVL

--

-

ORDERING CODE

	Port Size SAE
01	SAE 6
02	SAE 8
03	SAE10
04	SAE 12
05	SAE 16
06	SAE 20
07	SAE 24

Spring (bar)

	0,5
4	4
8	8

Ordering Code Example:

CVL 03 = SAE 10-0,5 bar Cracking pressure.